

GRAPHIC SYMBOLS LEGEND	
	Building Elevation: Elevation Identification Sheet Reference
	Building Section: Section Identification Sheet Reference
	Interior Elevation: Elevation Identification Sheet Reference
	Detail: Detail Identification Sheet Reference
	Detail Reference: Enlarged Area Identification Sheet Reference
	Revision Indicator: Revised Area Identification Revision Number
	Partition Reference: Partition Reference Number
	Notation Indicator: Notation Reference Identification
	Datum Point:
	Grid Lines:
	Window Reference: Window Identification
	Door Reference: Door Identification
	Fixture Reference: Fixture Identification Fixture Type

MATERIALS LEGEND			
	Undisturbed Earth		Sand Fill
	Compacted Earth Fill		Granular Fill
	Top Soil / Potting Soil		Asphaltic Concrete
CONCRETE and MASONRY			
	Concrete		Stone
	Concrete Masonry Unit		Clay Tile
	Brick		Marble
	Ceramic Tile / Quarry Tile		Grout / Mortar
METAL			
	Steel		Other Metals
OTHER MATERIALS			
	Glass		
WALL MATERIALS			
	Stucco w/ Wire Lath		Veneer Plaster
	Gypsum Board		Thinset Tile
WOOD and PLASTICS			
	Wood Framing		Plywood
	Shim or Blocking		Glue-Laminated Material
	Finish Wood		
INSULATION			
	Batt Insulation		Blown Insulation
	Rigid Insulation		Fireproofing

ELECTRICAL SYMBOLS LEGEND	
	Duplex Wall Outlet
	Fourplex wall Outlet
	Weather-Protected Wall Outlet
	Ground Fault-Intercept Outlet
	1/2 Hot Switch-Controlled Outlet
	Ceiling Outlet
	Floor Outlet
	Range Outlet
	220 V Specialty Outlet
	Wall-Mounted Incandescent Fixture
	Ceiling-Mounted Incandescent Fixture
	Recessed Incandescent Fixture
	Recessed Compact Fluorescent Fixture
	Recessed Wall-Washer Incandescent Fixture
	MR-16 Low-Voltage Accent Fixture
	Low-Voltage Wall Accent Fixture
	Undercabinet Fluorescent Fixture
	Incandescent Wall Sconce
	Floodlight
	Four-Bulb Fluorescent Fixture
	Chandelier
	Ceiling Fan
	Smoke Detector
	Wall Switch
	Three-Way Wall Switch
	Four-Way Wall Switch
	Dimmer Switch
	Cable TV Jack
	Telephone Jack
	Push Button Control
	Seaback Thermostat
	Exhaust Fan
	Recessed Micro-Halogen Fixture
	Low-Voltage Control Station

630 S PARISH PLACE

A New Custom Residence

630 S Parish Place Burbank, CA 91506

Owner: CBC Holding Company, LLC
101 South First St, Suite 400
Burbank, CA 91502

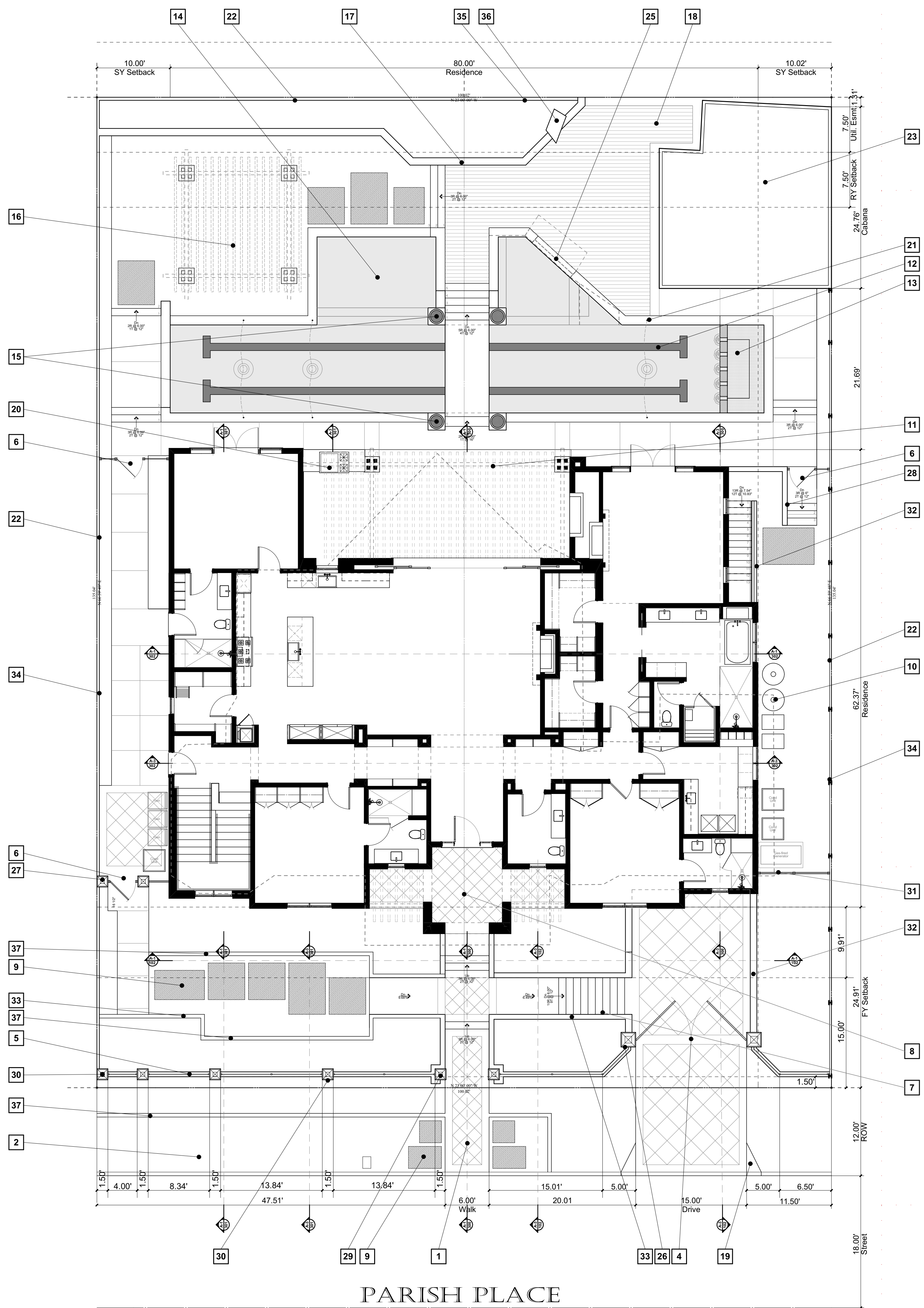
Architect: R.A. Hamerly AIA Architect, Inc
7353 Silkwood Lane
Highland, CA 92346

Contractor: To Be Selected

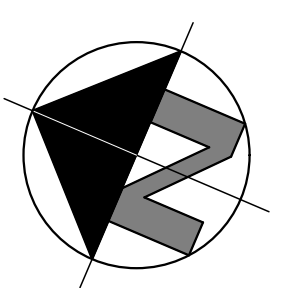
ABBREVIATIONS

A	Anchor Bolt	C	CONTR	Contractor	F	FIT	Furnished & Installed by	K	K	Kelvin / 1000	P	P	Phase / Phone	S	STC	Sound Transmission	X	X	Exterior Grade
AB	Above and Below	COOR	COORD	Coordinate	FIXT	FIXT	Fixture	KD	KD	Kiln-Dried	PH	PH	Plate / Property Line	STD	STD	Standard	XGR	XGR	Cross-Reference
AC	Asphaltic Concrete / Air Conditioner	CR	CR	Cold Rolled	FL	FL	Flow Line / Floor	KIP	KIP	1000 Pounds	PLAM	PLAM	Plastic Laminate	STL	STL	Steel	XREF	XREF	Cross-Reference
ACC	Accordion	CS	CS	Cast Steel	FLASH	FLASH	Flashing	KIT	KIT	Kitchen	PLY	PLY	Plywood	STOR	STOR	Storage	Y	Y	Yard / Yard Drain
ACT	American Concrete Institute	CTR	CTR	Center	FLR	FLR	Floor	KNCK	KNCK	Knock-Out	STR	STR	Structure / Structural	YD	YD	Yard / Yard Drain	YP	YP	Yellow Pine
ACOUS	Acoustical	CTSK	CTSK	Countersunk	FLOR	FLOR	Fluorescent	FLOR	FLOR	Fluorescent	STRUC	STRUC	Structure / Structural	Z	Z	Zinc			
ACT	Acoustical Ceiling Tile	CU	CU	Cubic	FOM	FOM	Face of Masonry	FLOR	FLOR	Fluorescent	SUBFLR	SUBFLR	Subfloor	Z	Z	Zinc			
AD	Area Drain	CW	CW	Cold Water	FOC	FOC	Face of Concrete	FLOR	FLOR	Fluorescent	SUPP	SUPP	Supplementary						
ADD	Addendum	D	D	Diameter	FOF	FOF	Face of Finish	FLOR	FLOR	Fluorescent	SUSP	SUSP	Suspended						
ADJ	Adjacent / Adjustable	DBL	DBL	Double	FOI	FOI	Face of Insulation	FLOR	FLOR	Fluorescent	SW	SW	Southwest / Shear Wall						
AFF	Above Finish Floor	DC	DC	Direct Current	FOI	FOI	Face of Insulation	FLOR	FLOR	Fluorescent	SWC	SWC	Special Wall Coating						
AGG	Aggregate	DECID	DECID	Deciduous	FOI	FOI	Face of Insulation	FLOR	FLOR	Fluorescent	SYM	SYM	Symmetrical						
AIA	American Institute of Architects	DEG	DEG	Degree	FOI	FOI	Face of Insulation	FLOR	FLOR	Fluorescent									
AISC	American Institute of Steel Construction	DEPT	DEPT	Department	FOI	FOI	Face of Insulation	FLOR	FLOR	Fluorescent									
ALUM	Aluminum	DET	DET	Detail	FOI	FOI	Face of Insulation	FLOR	FLOR	Fluorescent									
ALT	Alternate	DF	DF	Douglas Fir	FOI	FOI	Face of Insulation	FLOR	FLOR	Fluorescent									
ANOD	Anodized	DIA	DIA	Diameter	FOI	FOI	Face of Insulation	FLOR	FLOR	Fluorescent									
AP	Access Panel	DIAG	DIAG	Diagonal	FOI	FOI	Face of Insulation	FLOR	FLOR	Fluorescent									
APPROX	Approximate	DICG	DICG	Drilled-In-Concrete	FOI	FOI	Face of Insulation	FLOR	FLOR	Fluorescent									
APT	Apartment	DIF	DIF	Diffuser	FOI	FOI	Face of Insulation	FLOR	FLOR	Fluorescent									
ARCH	Architect / Architectural	DISC	DISC	Disconnect	FOI	FOI	Face of Insulation	FLOR	FLOR	Fluorescent									
ASB	Asbestos	DISP	DISP	Disposal / Disposable	FOI	FOI	Face of Insulation	FLOR	FLOR	Fluorescent									
ASSOC	Associate	DIV	DIV	Division / Divided	FOI	FOI	Face of Insulation	FLOR	FLOR	Fluorescent									
ASPH	Asphalt	DN	DN	Down	FOI	FOI	Face of Insulation	FLOR	FLOR	Fluorescent									
ASTM	American Society for Testing and Materials	DR	DR	Drain / Door	FOI	FOI	Face of Insulation	FLOR	FLOR	Fluorescent									
AT	Acoustic Tile	DS	DS	Downspout	FOI	FOI	Face of Insulation	FLOR	FLOR	Fluorescent									
AUTO	Automatic	DSP	DSP	Dry Stand Pipe	FOI	FOI	Face of Insulation	FLOR	FLOR	Fluorescent									
AVE	Avenue	DW	DW	Dishwasher	FOI	FOI	Face of Insulation	FLOR	FLOR	Fluorescent									
AVG	Average	DWG	DWG	Drawing	FOI	FOI	Face of Insulation	FLOR	FLOR	Fluorescent									
AWP	Acoustic Wall Panel	DWL	DWL	Dowel	FOI	FOI	Face of Insulation	FLOR	FLOR	Fluorescent									
B	Below	DWR	DWR	Dry Wood	FOI	FOI	Face of Insulation	FLOR	FLOR	Fluorescent									
BC	Base of Curb	DZ	DZ	Dozen	FOI	FOI	Face of Insulation	FLOR	FLOR	Fluorescent									
BD	Board	E	E	East / Existing	FOI	FOI	Face of Insulation	FLOR	FLOR	Fluorescent									
BFD	Bi-Fold Door	EACH	EACH	Each	FOI	FOI	Face of Insulation	FLOR	FLOR	Fluorescent									
BITUM	Bituminous	EAS	EAS	East	FOI	FOI	Face of Insulation	FLOR	FLOR	Fluorescent									
BL	Building Line	EAS	EAS	East	FOI	FOI	Face of Insulation	FLOR	FLOR	Fluorescent									
BLDG	Building	EAS	EAS	East	FOI	FOI	Face of Insulation	FLOR	FLOR	Fluorescent									
BLK	Block	EAS	EAS	East	FOI	FOI	Face of Insulation	FLOR	FLOR	Fluorescent									
BLKG	Blacking	EAS	EAS	East	FOI	FOI	Face of Insulation	FLOR	FLOR	Fluorescent									
BLT	Blot	EAS	EAS	East	FOI	FOI	Face of Insulation	FLOR	FLOR	Fluorescent									
BLVD	Boulevard	EAS	EAS	East	FOI	FOI	Face of Insulation	FLOR	FLOR	Fluorescent									
BM	Beam / Bench Mark	EAS	EAS	East	FOI	FOI	Face of Insulation	FLOR	FLOR	Fluorescent									
BOT	Bottom	EAS	EAS	East	FOI	FOI	Face of Insulation	FLOR	FLOR	Fluorescent									
BR	Bedroom	EAS	EAS	East	FOI	FOI	Face of Insulation	FLOR	FLOR	Fluorescent									
BRG	Bearing	EAS	EAS	East	FOI	FOI	Face of Insulation	FLOR	FLOR	Fluorescent									
BRKT	Bracket	EAS	EAS	East	FOI	FOI	Face of Insulation	FLOR	FLOR	Fluorescent									
BSMT	Basement	EAS	EAS	East	FOI	FOI	Face of Insulation	FLOR	FLOR	Fluorescent									
BTR	Better	EAS	EAS	East	FOI	FOI	Face of Insulation	FLOR	FLOR	Fluorescent									
BTU	British Thermal Unit	EAS	EAS	East	FOI	FOI	Face of Insulation	FLOR	FLOR	Fluorescent									
BTWN	Between	EAS	EAS	East	FOI	FOI	Face of Insulation	FLOR	FLOR	Fluorescent									
BUR	Built Up Roofing	EAS	EAS	East	FOI	FOI	Face of Insulation	FLOR	FLOR	Fluorescent									
BW	Base of Wall	EAS	EAS	East	FOI	FOI	Face of Insulation	FLOR	FLOR	Fluorescent									
C	Celsius / Centigrade	EAS	EAS	East	FOI	FOI	Face of Insulation	FLOR	FLOR	Fluorescent									
CAB	Cabinet	EAS	EAS	East	FOI	FOI	Face of Insulation	FLOR	FLOR	Fluorescent									
CAD	Computer Aided Drafting & Design	EAS	EAS	East	FOI	FOI	Face of Insulation	FLOR	FLOR	Fluorescent									
CADD	Computer Aided Drafting & Design	EAS	EAS	East	FOI	FOI	Face of Insulation	FLOR	FLOR	Fluorescent									
CAP	Capacity	EAS	EAS	East	FOI	FOI	Face of Insulation	FLOR	FLOR	Fluorescent									
CARP	Carpet	EAS	EAS	East	FOI	FOI	Face of Insulation	FLOR	FLOR	Fluorescent									
CB	Catch Basin	EAS	EAS	East	FOI	FOI	Face of Insulation	FLOR	FLOR	Fluorescent									
CD	Ceiling Diffuser	EAS	EAS	East	FOI	FOI	Face of Insulation	FLOR	FLOR	Fluorescent									
CEM	Cement	EAS	EAS	East	FOI	FOI	Face of Insulation	FLOR	FLOR	Fluorescent									
CEK	Corner Guard	EAS	EAS	East	FOI	FOI	Face of Insulation	FLOR	FLOR	Fluorescent									
CF	Cubic Feet	EAS	EAS	East	FOI	FOI	Face of Insulation	FLOR	FLOR	Fluorescent									
CFM	Cubic Feet per Minute	EAS	EAS	East	FOI	FOI	Face of Insulation	FLOR	FLOR	Fluorescent									
CG	Corner Guard	EAS	EAS	East	FOI	FOI	Face of Insulation	FLOR	FLOR	Fluorescent									
CHAM	Chamfered	EAS	EAS	East	FOI	FOI	Face of Insulation	FLOR	FLOR	Fluorescent									
CI	Cast Iron	EAS	EAS	East	FOI	FOI	Face of Insulation	FLOR	FLOR	Fluorescent									
CIP	Cast-In-Place / Cast iron	EAS	EAS	East	FOI	FOI	Face of Insulation	FLOR	FLOR	Fluorescent									
CIR	Pipe	EAS	EAS	East	FOI	FOI	Face of Insulation	FLOR	FLOR	Fluorescent									
CJ	Circular Ceiling Joist / Control	EAS	EAS	East	FOI	FOI	Face of Insulation	FLOR	FLOR	Fluorescent									
CKT	Circuit	EAS	EAS	East	FOI	FOI	Face of Insulation	FLOR	FLOR	Fluorescent									
CL	Center Line	EAS	EAS	East	FOI	FOI	Face of Insulation	FLOR	FLOR	Fluorescent									
CLG	Ceiling	EAS	EAS	East	FOI	FOI	Face of Insulation	FLOR	FLOR	Fluorescent									
CLKG	CaULKing	EAS	EAS	East	FOI	FOI	Face of Insulation	FLOR	FLOR	Fluorescent									
CLOS	Close	EAS	EAS	East	FOI	FOI	Face of Insulation	FLOR	FLOR	Fluorescent									
CLSR	Closer	EAS	EAS	East	FOI	FOI	Face of Insulation	FLOR	FLOR	Fluorescent									
CMU	Concrete Masonry Unit	EAS	EAS	East	FOI	FOI	Face of Insulation	FLOR	FLOR	Fluorescent									
CND	Condul / Condenser	EAS	EAS	East	FOI	FOI	Face of Insulation	FLOR	FLOR	Fluorescent									
CO	Clean-Out	EAS	EAS	East	FOI	FOI	Face of Insulation	FLOR	FLOR	Fluorescent									
COL	Column	EAS	EAS	East	FOI	FOI	Face of Insulation	FLOR	FLOR	Fluorescent									
COMP	Composite / Composition	EAS	EAS	East	FOI	FOI	Face of Insulation	FLOR	FLOR	Fluorescent									
CONC	Concrete	EAS	EAS	East	FOI	FOI	Face of Insulation	FLOR	FLOR	Fluorescent									
CONN	Connect / Connection	EAS	EAS	East	FOI	FOI	Face of Insulation	FLOR	FLOR	Fluorescent									
CONST	Construction	EAS	EAS	East	FOI	FOI	Face of Insulation	FLOR	FLOR	Fluorescent									
CONT	Continuous	EAS	EAS	East	FOI	FOI	Face of Insulation	FLOR	FLOR	Fluorescent									

CONTR	Contractor	CONTR	Contractor	CONTR	Contractor
-------	------------	-------	------------	-------	------------



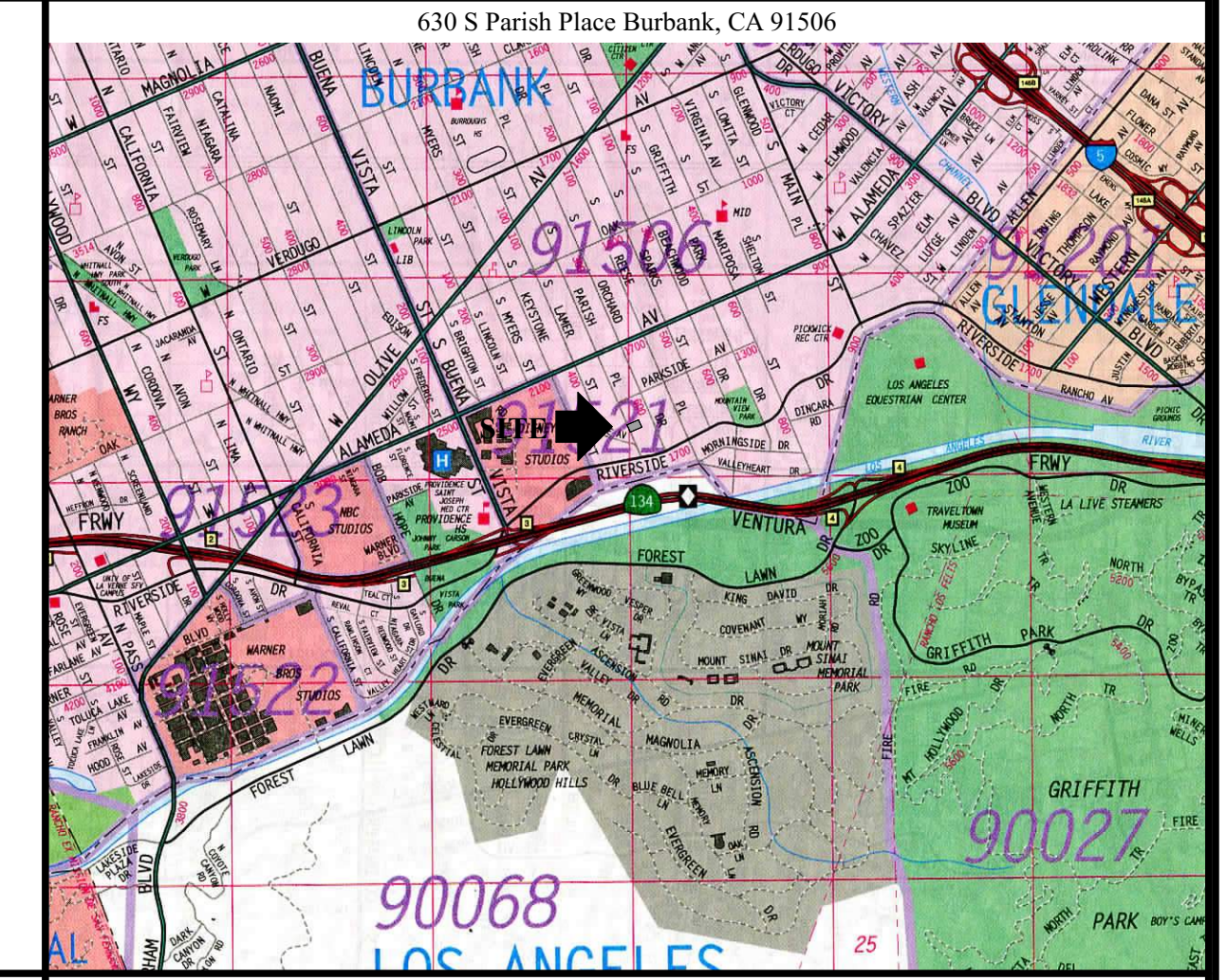
PARISH PLACE



FRONT YARD HARDSCAPE ANALYSIS

FRONT YARD AREAS:	
Yard Area:	2,491.50 sf
Hardscape Area:	
Driveway Area	397.48 sf
Walkway 1 Area	265.08 sf
Paver Area	137.00 sf
Walkway 2 Area	78.96 sf
Covered Porch Projection	42.32 sf
Walls/Curbs Area	191.75 sf
Hardscape Total	1,112.59 sf
Hardscape Ratio:	
1,112.59 sf / 2,491.50 sf = 44.66% < 45%	
Artificial Turf Ratio:	
Turf Area = 163.25 sf / 2,491.50 sf = 6.55% of yard area	

VICINITY MAP



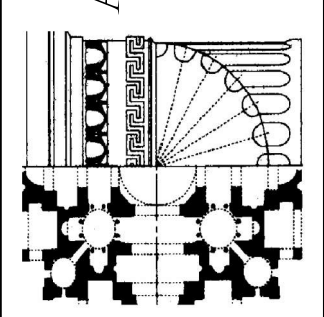
PROJECT DATA

Owner:	CBC Holding Company, LLC 101 South First St, Suite 400 Burbank, CA 91502 (818) 841-5800
Architect:	R.A. Hamerly, AIA Architect, Inc. 7353 Silkwood Lane Highland, CA 92346 (909) 862-5533 630 S Parish Place Burbank, CA 91506
Project Address:	630 S Parish Place Burbank, CA 91506
Assessor's Parcel No.:	2443-018-008
Planning Data:	Thomas Bros: 563 F-3
Legal Description:	2443-018-008
Legal Description:	Lots 73 and 74 of Tract 10363, As recorded on pages 66 and 67 in Book 149 of Maps.
Zoning Designation:	R-1-H
Zone Information:	Single-Family Residential - Horsekeeping
General Plan Designation:	Low-Density Residential
Existing Land Use:	Single-Family Residential
Proposed Land Use:	Single-Family Residential
Occupancy Classification:	R-3 (Living) + U (Private Garage)
Construction Type:	Living: Type V - NR, Sprinklered Garage: Type V - 1 Hr, Sprinklered
City Planning Cases:	None
Code Compliance:	2019 CBC, 2019 CMC, 2019 CPC, 2019 CEG, 2019 CRC, 2019 GBC
Site Coverage: (not project area totals)	
Site Area:	0.3094 ac (gross) = 13,506.70 sf (100%)
Allowable Floor Area Ratio:	7,500 sf * 0.40 + 6,006.70 sf * 0.30 = 4,802.01 sf
Maximum Lot Coverage:	50% = 6,753.35 sf
Existing Lot Coverage:	
Main Residence Footprint Area:	3,239.11 sf (23.98%)
Cabana Area:	564.40 sf (4.18%)
Garage/Stables Area:	1,102.39 sf (8.16%)
Covered Porches Area:	777.09 sf (5.75%)
Pool & Spa Area:	1,045.25 sf (7.74%)
Drive/Hardscape Area:	4,234.22 sf (32.02%)
Landscape Area:	2,454.24 sf (18.17%)
Total Site Coverage:	13,506.70 sf (100%)
FAR:	3,239.11 + 1,102.39 + 564.40 + 777.09 + 1,045.25 + 4,234.22 + 2,454.24 = 5,282.45
Proposed Lot Coverage:	
Main Residence Footprint Area:	4,153.12 sf (30.75%)
Acc Dwelling Unit Area (Existing):	564.40 sf (0.00%) [0 Coverage]
Covered Porches Area:	134.07 sf (0.99%)
Pool & Spa Area:	1,083.07 sf (8.02%)
Drive/Hardscape Area:	3,755.40 sf (27.80%)
Landscape Area:	4,381.04 sf (32.44%)
Total Site Coverage:	13,506.70 sf (100%)
FAR:	4,153.12 + 28.71 + 243.73 + 295.03 = 4,720.59
Proposed Parking:	>3,400 sf = 3 spaces required; 6 garage spaces provided.

SITE LEGEND

1	Main Entry
2	Artificial Turf
3	
4	Vehicular Gate with Activators
5	Retaining Wall with Low Tubular Steel Fence; 6"W x 48"H max; 50% of ht to be open rail fence.
6	Access Gate
7	Staircase Access to Driveway
8	Enhanced Porch
9	Stepping Pads at Artificial Turf
10	Pool Equipment
11	Covered Patio
12	Lap Pool: Provide two swim lanes and three laminar flow water jets.
13	Spa with Tiled Headwall and Weirs
14	Baja Shelf
15	Fire Bowls
16	Shade Structure with Vine Pockets
17	Seatwall with Stone Veneer to Match Architecture
18	Porcelain Wood-grain Pavers set on slab-on-grade.
19	New curb cut; 15'-0"W max. Remove and repair existing cut.
20	BBQ Island
21	Laminar Stream Deck Jet Arching into Pool
22	Wood Fence with heavy Horizontal Planks and Steel Wide Flange Beam; 72"H to match existing Cabana to Remain - No Changes Proposed
23	
24	
25	Location of Existing Underwater Window
26	Plaster: 36"H x 24" Sq; Stone Veneer with Precast Cap.
27	Plaster: 72"H x 18" Sq; Stone Veneer with Precast Cap.
28	Equipment Enclosure Wall: 54"H x 8" Th; Painted Brick.
29	Plaster: 48"H x 18" Sq; Stone Veneer with Precast Cap.
30	Plaster: 36"H x 18" Sq; Stone Veneer with Precast Cap.
31	Fence: 72"H Horizontal Plank; Painted Finish.
32	Retaining Wall: Stone Veneer with Precast Cap; Ht Varies.
33	Curb Wall: Stone Veneer with Precast Cap; 6"W x Ht Varies.
34	Fence: Existing wood plank fence; 96"H; Repair or replace as needed.
35	Fence: Existing wood plank fence; 108"H; Repair or replace as needed.
36	Existing chimney assembly to remain.
37	Mow Strip: 6"W Concrete mow strip.

R.A. HAMERLY
AIA ARCHITECT, INC.
7353 Silkwood Lane
Highland, CA 92346
909-862-5533
rhamerly@sbeglobal.net



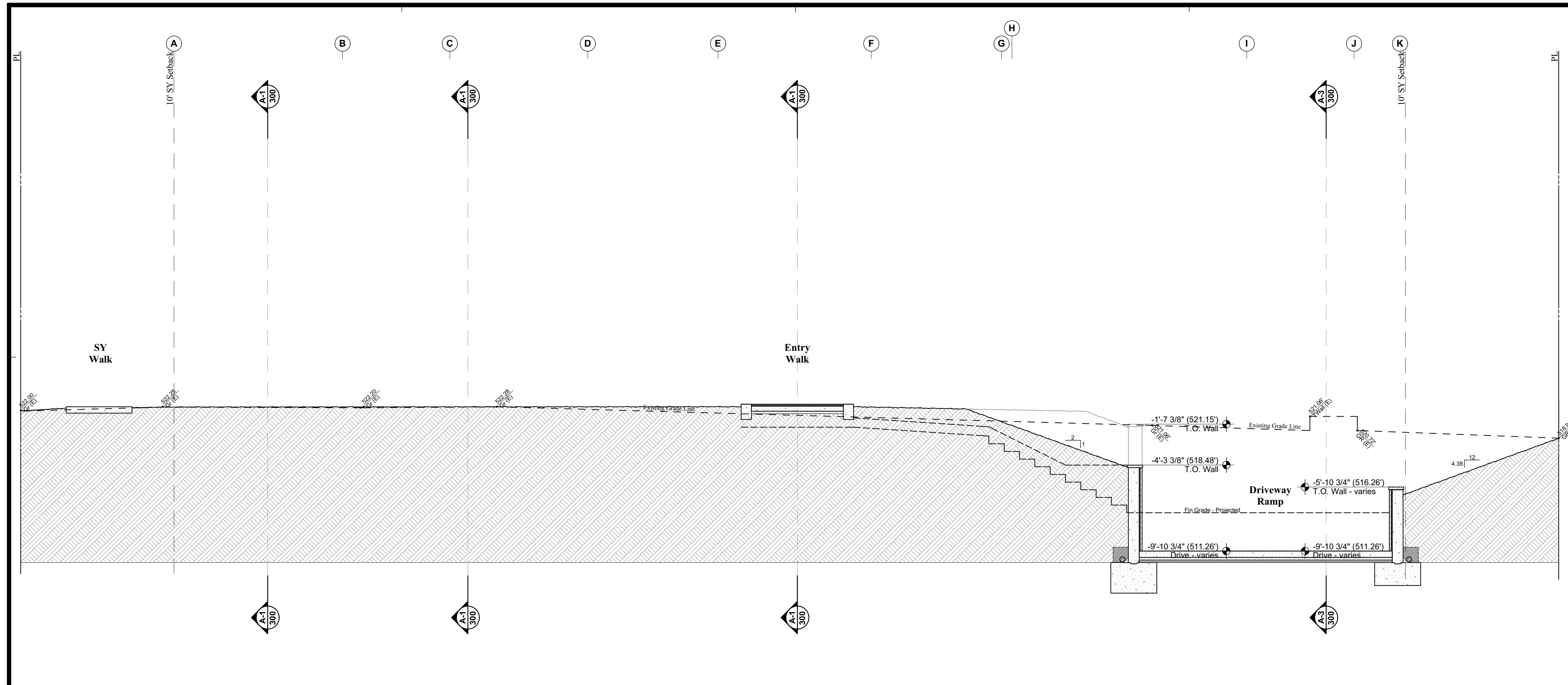
MARK	DATE	DESCRIPTION

The drawings and/or accompanying specifications and the designs and ideas therein, as instruments of service, are the exclusive property of R.A. Hamerly, AIA Architect, Inc. Their use and publication shall be prohibited except by written consent from the Architect. Title and copyright to these plans and/or specifications shall remain with R.A. Hamerly, AIA Architect, Inc. without prejudice, and visual contact with this information shall constitute a violation of the professional code of ethics.

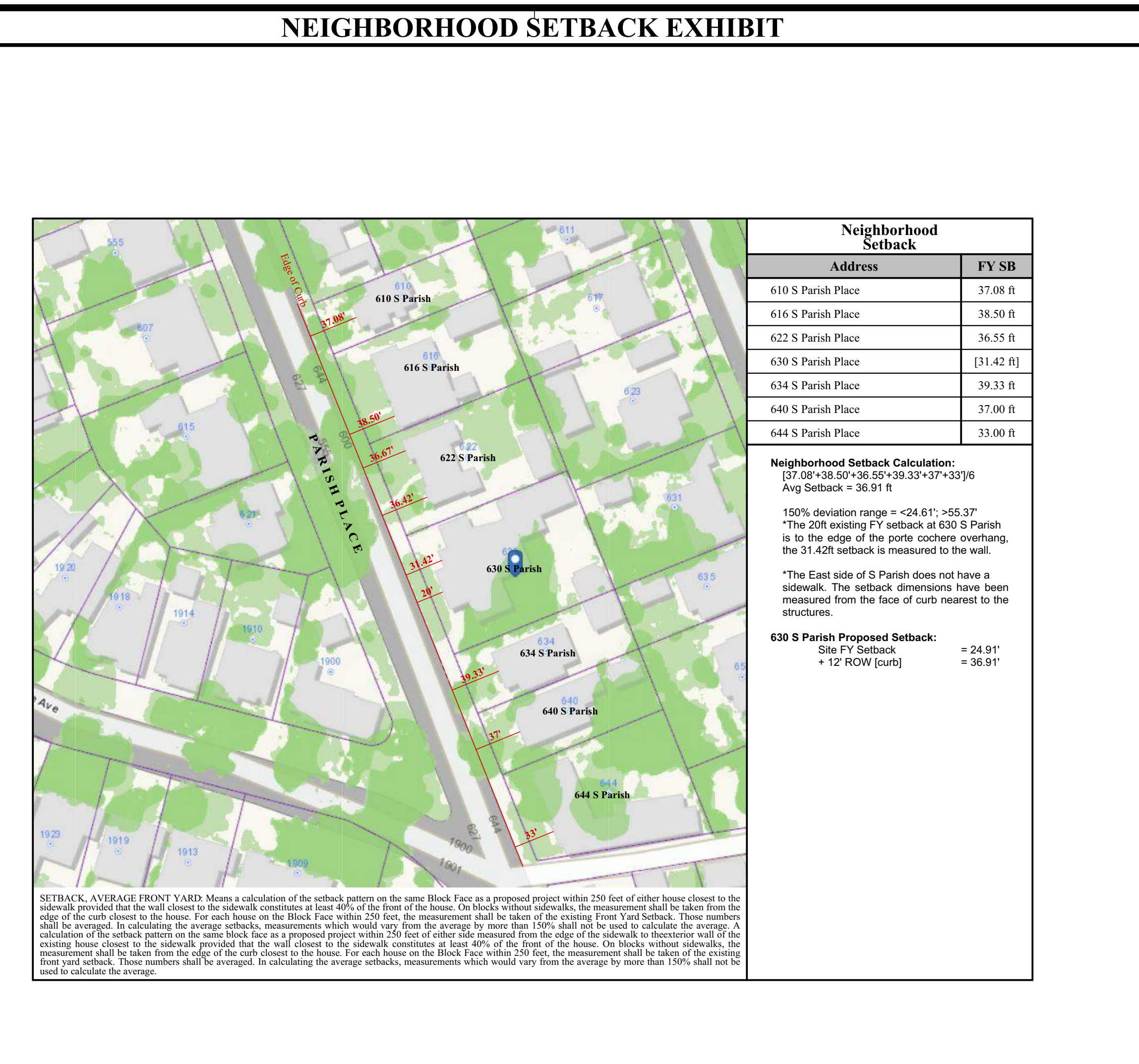
630 S PARISH PLACE
A New Custom Single-Family Residence
630 S Parish Place
Burbank, CA 91506



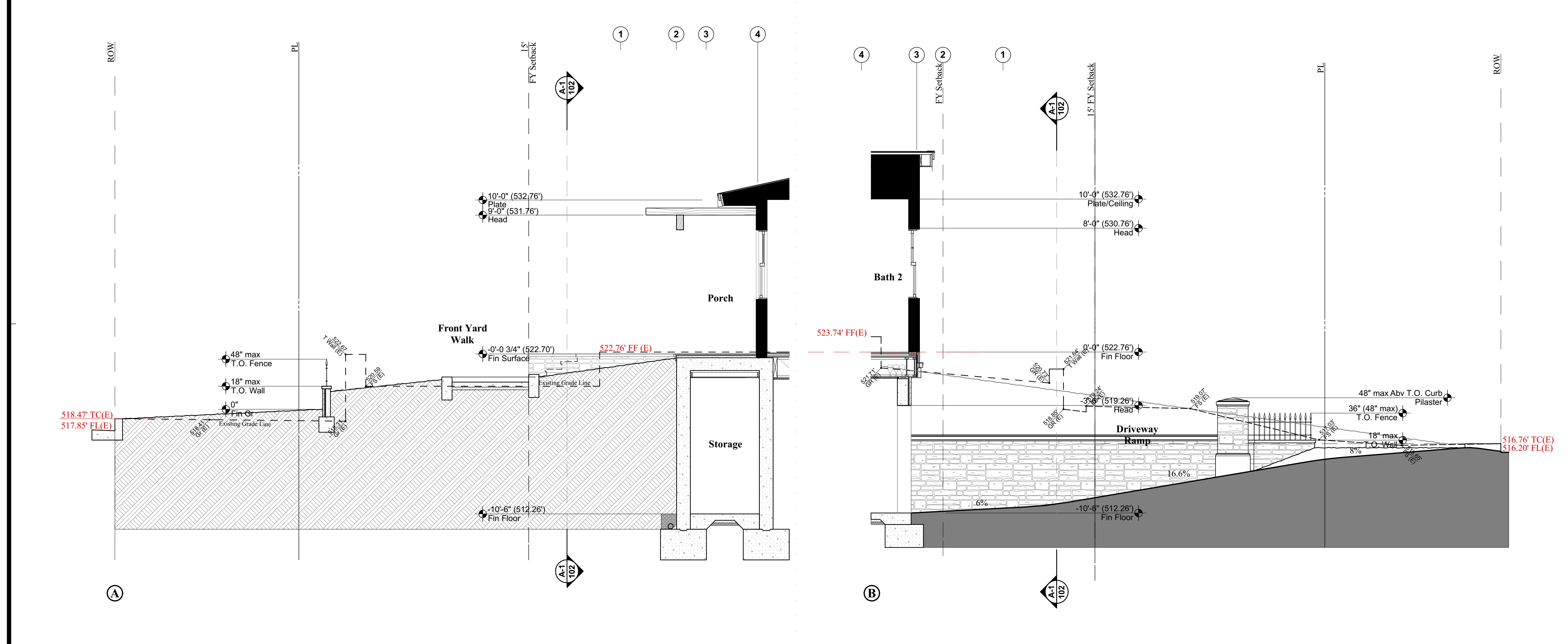
PROJECT NO.:	112020
MODEL FILE:	
DRAWN BY:	R.A. Hamerly
CHKD BY:	R.A. Hamerly
COPYRIGHT:	R.A. Hamerly AIA Architect, Inc.
SHEET TITLE:	Proposed Site Plan



A-1) SITE SECTION 1/4" = 1'-0"

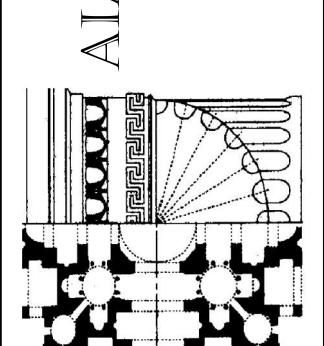


A-2) SITE SECTIONS 1/4" = 1'-0"



A-3) SITE SECTIONS 1/4" = 1'-0"

**R.A. HAMERLY
AIA ARCHITECT, INC.**
 7355 Silkwood Lane
 Highland, CA 92346
 909-862-5533
 rharchi@sbglobal.net



MARK	DATE	DESCRIPTION
A	11/20/20	Site Details

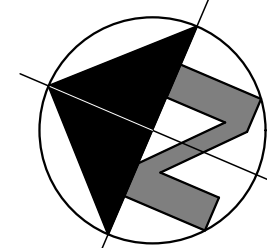
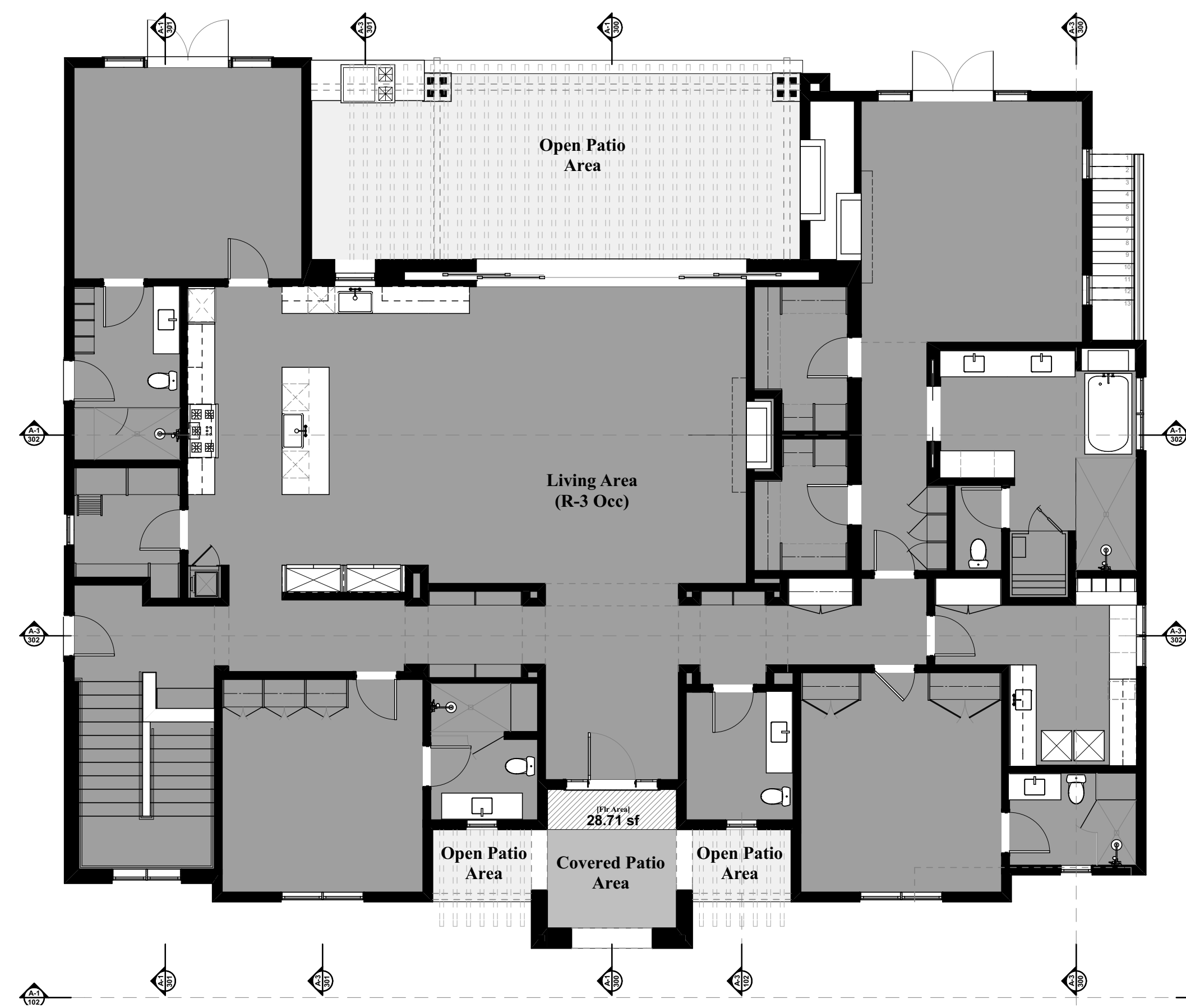
The Drawings and/or accompanying specifications and the designs and ideas therein, as instruments of service, are the exclusive property of Rendall A. Hamerly, AIA Architect, Inc. Their use and publication shall be prohibited except by written consent from the Architect. Title and copyright to these plans and/or specifications shall remain with Rendall A. Hamerly, AIA Architect, Inc. without prejudice, and visual contact with this document shall constitute a violation of the professional code of ethics.

630 S PARISH PLACE
 A New Custom Single-Family Residence
 630 S Parish Place
 Burbank, CA 91506



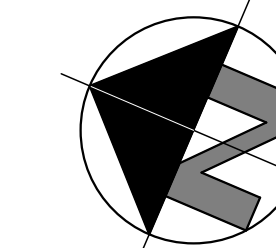
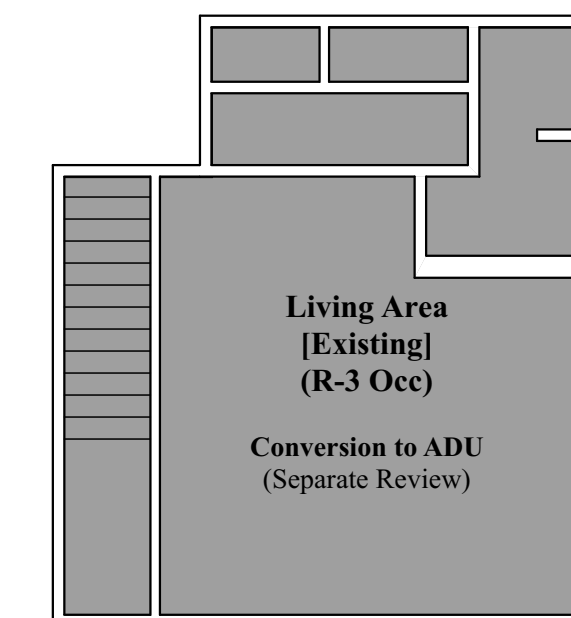
PROJECT NO: 112020
 MODEL FILE:
 DRAWN BY: R.A. Hamerly
 CHKD BY: R.A. Hamerly
 COPYRIGHT:
 R.A. Hamerly AIA Architect, Inc.
 SHEET TITLE:
 Site Details

A-102



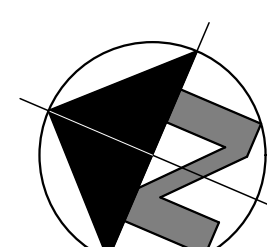
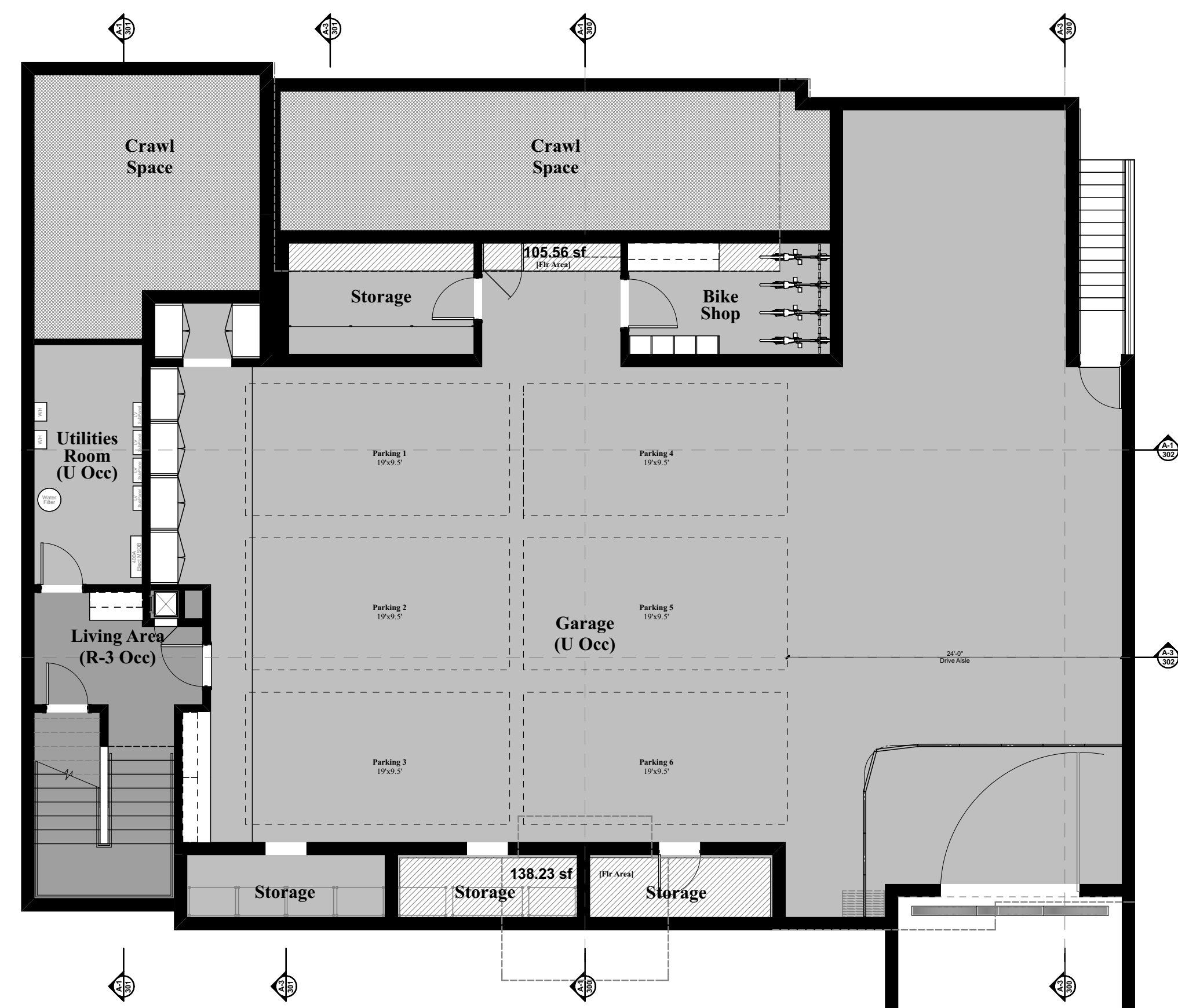
A-1) RESIDENCE FIRST FLOOR PLAN

1/8" = 1'-0"



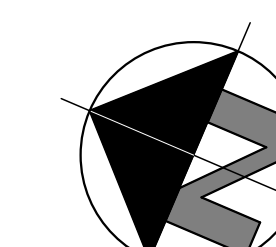
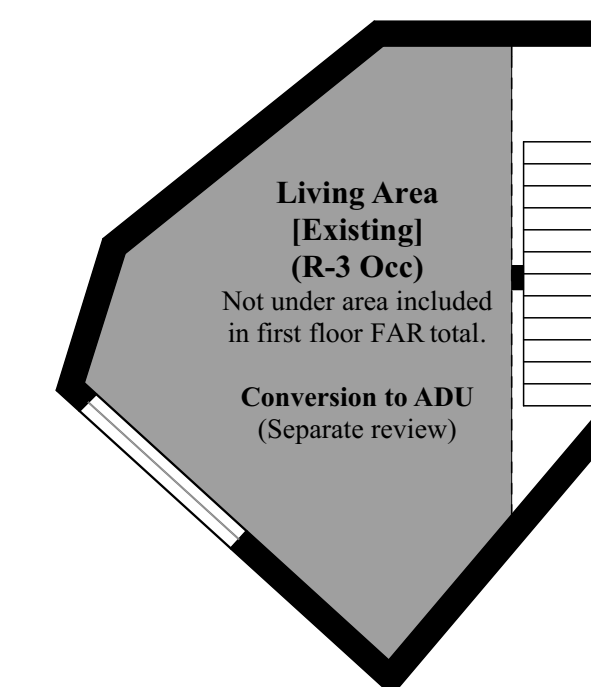
B-1) CABANA FIRST FLOOR PLAN

1/8" = 1'-0"



A-2) RESIDENCE BASEMENT FLOOR PLAN

1/8" = 1'-0"



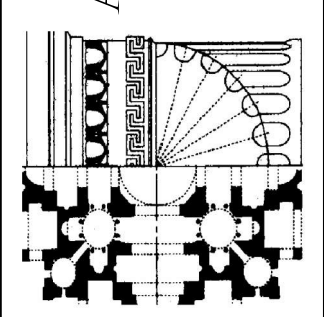
B-2) CABANA BASEMENT FLOOR PLAN

1/8" = 1'-0"

AREA SUMMARY

BUILDING AREAS:			
First Floor:			
Living Area [R Occ]	4,153.12 sf	[4,153.12 FA]	
Covered Porch	134.07 sf	[28.71 FA]	
Open Porches	617.21 sf	[0 FA]	
Cabana Area [Existing] [R Occ] - ADU	564.40 sf	[0 FA]	
Over-Height Ceiling Area [M BR]	295.03 sf	[295.03 FA]	
First Floor Total	4,851.83 sf		
FAR Total	4,476.86 sf		
Basement Floor Areas:			
Garage Area [U Occ]	3,009.28 sf	[0 FA]	
Living Area [R Occ]	261.80 sf	[0 FA]	
Storage/Mechanical Area [U Occ]	699.39 sf	[243.73 FA]	
Cabana Basement [Existing] [R Occ] - ADU	447.33 sf	[0 FA]	
Basement Total	4,417.80 sf		
FAR Total	243.73 sf		
Building Totals:			
Living Area [R Occ]	4,414.92 sf	[4,153.12 FA]	
Garage-Mech/Storage Areas [U Occ]	3,708.67 sf	[243.73 FA]	
Cabana Area [R Occ] - ADU	1,011.73 sf	[0 FA]	
Covered Porch	134.07 sf	[28.71 FA]	
Over-Height Ceiling Area [M BR]	295.03 sf	[295.03 FA]	
Total Area	9,222.86 sf		
FAR Total	4,720.59 sf < 4,802.01 sf		
Exempt from Floor Area:			
Basement Covered Patio	3,726.74 sf		
ADU	105.36 sf		
	1,011.73 sf		
Allowable FAR	4,802.01 sf		
7,500 sf * 0.40 + 6,006.70 sf * 0.30 = 4,802.01 sf			

R.A. HAMERLY
AIA ARCHITECT, INC.
7353 Silkwood Lane
Highland, CA 92346
909-862-5533
rharchi@sbcglobal.net



MARK	DATE	DESCRIPTION
A	10/20/21	Admin Review

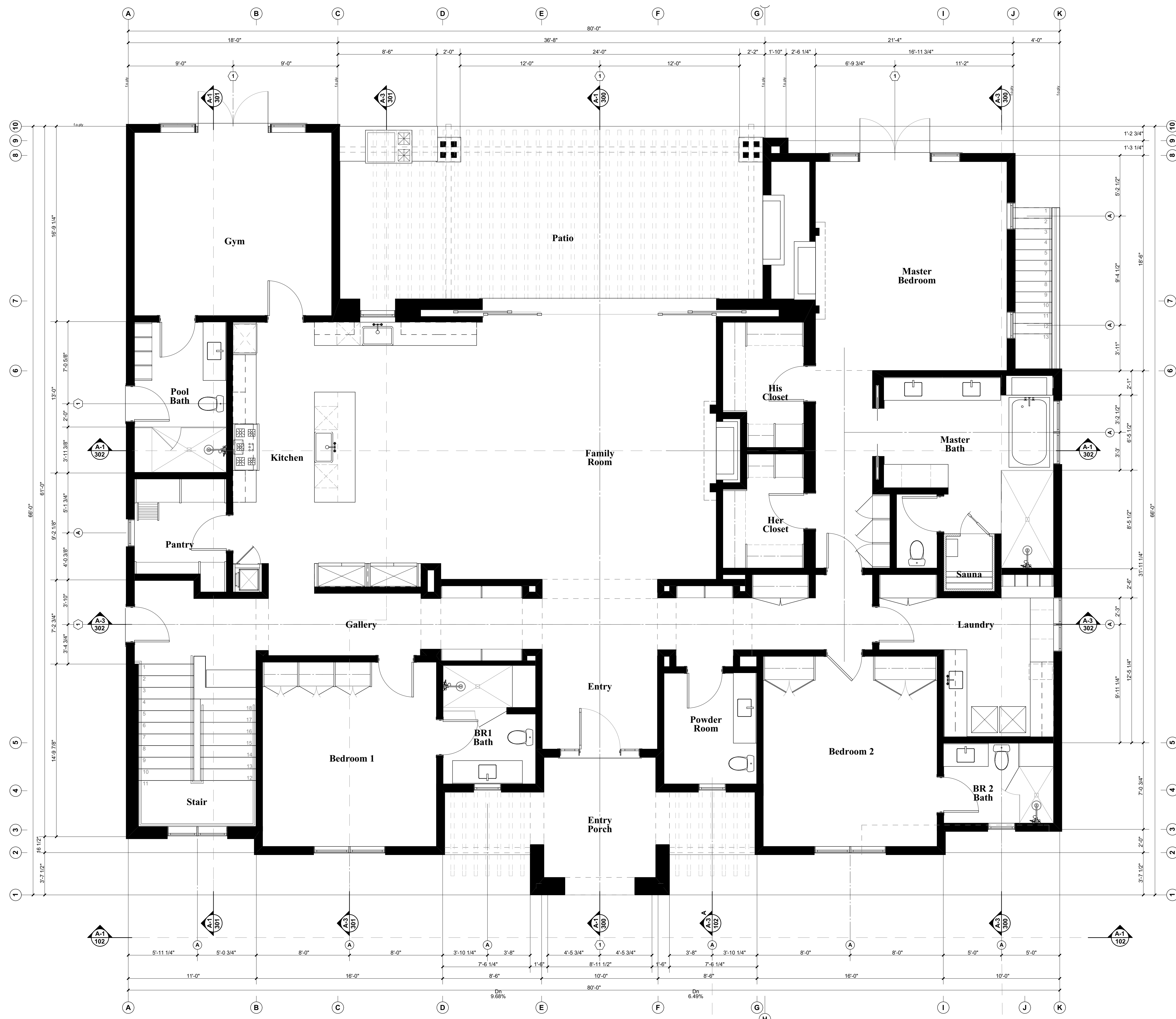
The Drawing and/or accompanying specifications and the designs and ideas therein, as instruments of service, are the exclusive property of Rendall A. Hamerly, AIA Architect, Inc. Their use and publication shall be prohibited except by written consent from the Architect. Title and copyright to these plans and/or specifications shall remain with Rendall A. Hamerly, AIA Architect, Inc. without prejudice, and visual contact with this document shall constitute a violation of the architectural profession's code of ethics.

630 S PARISH PLACE
A New Custom Single-Family Residence
630 S Parish Place
Burbank, CA 91506



PROJECT NO: 112020
MODEL FILE:
DRAWN BY: R.A. Hamerly
CHECKED BY: R.A. Hamerly
COPYRIGHT:
R.A. Hamerly AIA Architect, Inc.
SHEET TITLE:
FAR Plans

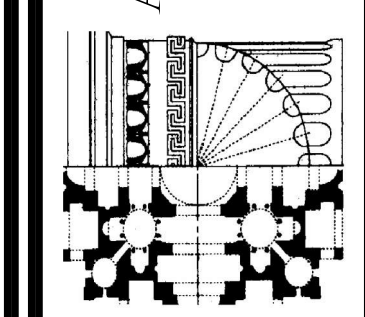
A-110



NOTES LEGEND

MARK	DATE	DESCRIPTION
A	10/20/21	Admin Review

R.A. HAMERLY
AIA ARCHITECT, INC.
7353 Silkwood Lane
Highland, CA 92346
909-862-5533
rharchi@sbcglobal.net



The Drawings and/or accompanying specifications and the designs and ideas therein, as instruments of service, are the exclusive property of Randal A. Hamerly, AIA Architect, Inc. Their use and publication shall be limited to the project and site for which they were prepared. Any reproduction or publication by any method in whole or in part is prohibited except by written consent from the Architect. Title and copyright to these plans and/or specifications shall remain with Randal A. Hamerly, AIA Architect, Inc. without prejudice, and visual contact with this document shall constitute a violation of the applicable provisions of the law.

630 S PARISH PLACE
A New Custom Single-Family Residence
630 S Parish Place
Burbank, CA 91506

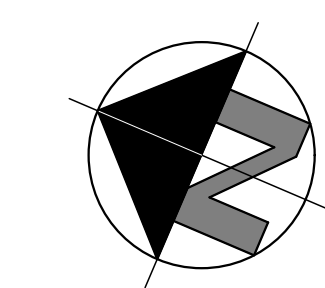
AREA SUMMARY

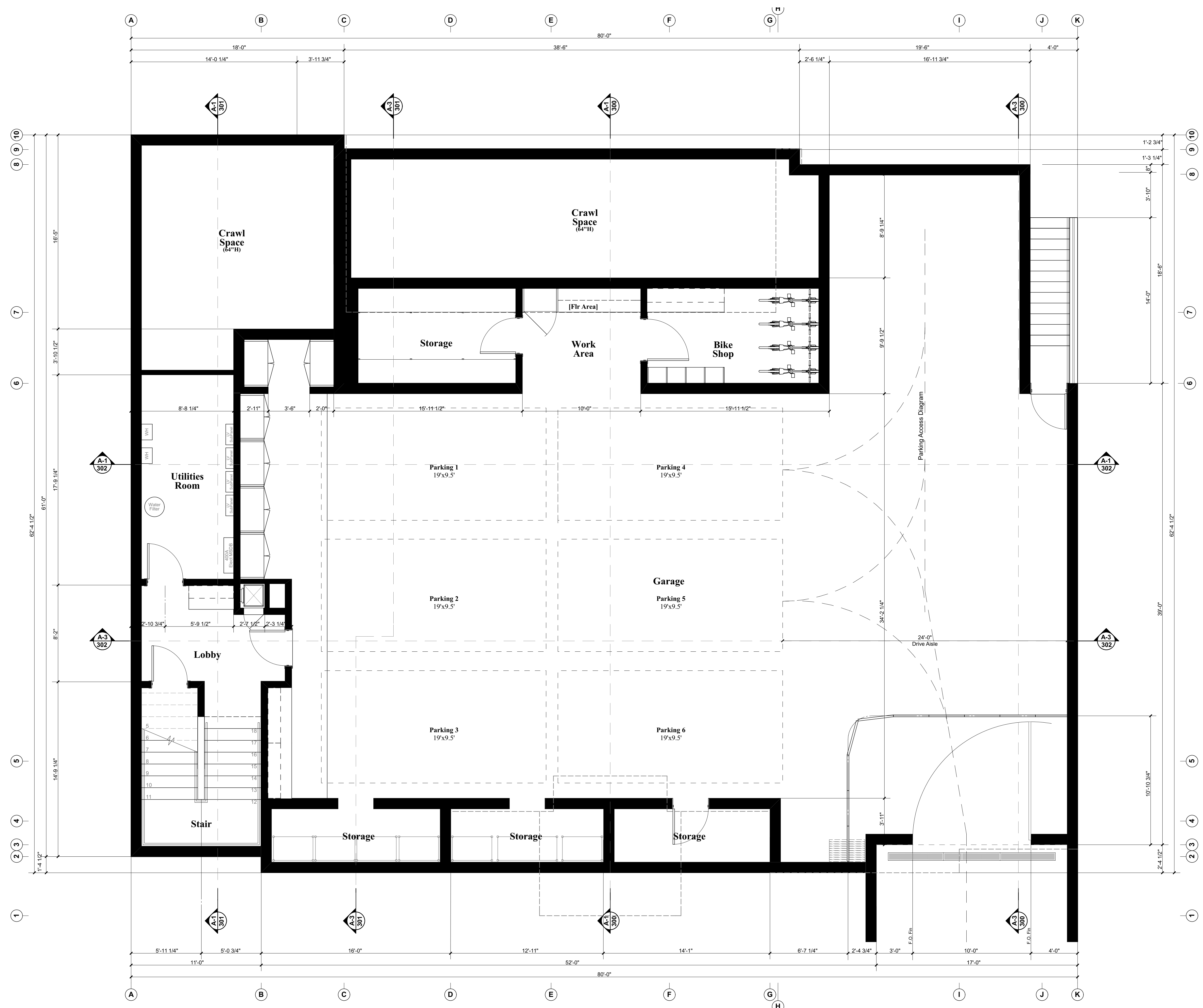
BUILDING AREAS:		
First Floor:		
Living Area [R occ]	4,153.12 sf	[4,153.12 FA]
Covered Porch	134.07 sf	[28.71 FA]
Open Porches	617.21 sf	[0 FA]
Cabana Area (Existing) [R Occ] - ADU	564.40 sf	[0 FA]
First Floor Total	4,851.59 sf	
FAR Total	4,181.83 sf	



PROJECT NO: 112020
MODEL FILE:
DRAWN BY: R.A. Hamerly
CHKD BY: R.A. Hamerly
COPYRIGHT:
R.A. Hamerly AIA Architect, Inc.
SHEET TITLE:
First Floor Plan

A-200

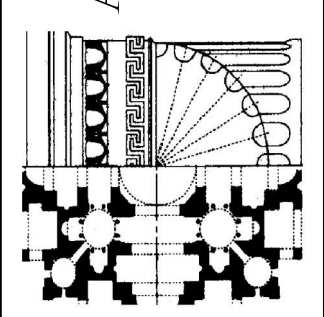




NOTES LEGEND

MARK	DATE	DESCRIPTION
A	5/20/2021	Admin Review

**R.A. HAMERLY
AIA ARCHITECT, INC.**
7353 Silkwood Lane
Highland, CA 92346
909-862-5533
rharchi@sbcglobal.net



The Drawings and/or accompanying specifications and the designs and ideas therein, as instruments of service, are the exclusive property of Randal A. Hamerly, AIA Architect, Inc. Their use and publication shall be limited to the project and site for which they were prepared. Any reproduction or publication by any method, in whole or in part, is prohibited, except by written consent from the Architect. Title and copyright to these plans and/or specifications shall remain with Randal A. Hamerly, AIA Architect, Inc. without prejudice, and visual contact with this document shall constitute access to the information contained herein.

630 S PARISH PLACE
A New Custom Single-Family Residence
630 S Parish Place
Burbank, CA 91506

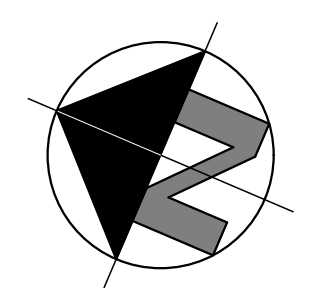
AREA SUMMARY

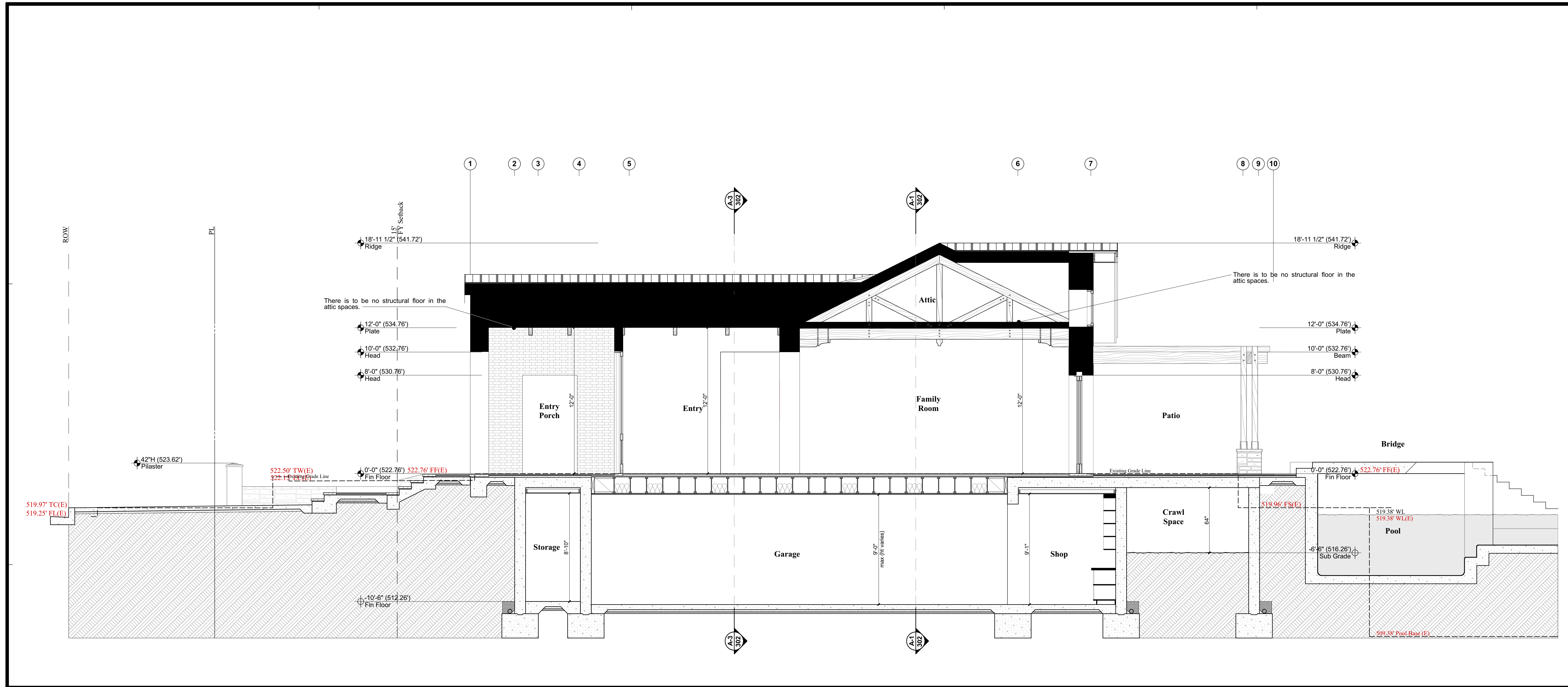
BUILDING AREAS:		
Basement Floor Area:	3,009.28 sf	[0 FA]
Garage Area [U Occ]	261.80 sf	[0 FA]
Living Area [R Occ]	699.39 sf	[243.73 FA]
Storage/Mechanical Area [U Occ]	447.80 sf	[0 FA]
Cabana Basement (Existing) [R Occ] - ADU	447.80 sf	[0 FA]
Basement Total	4,417.80 sf	
FAR Total	243.73 sf	



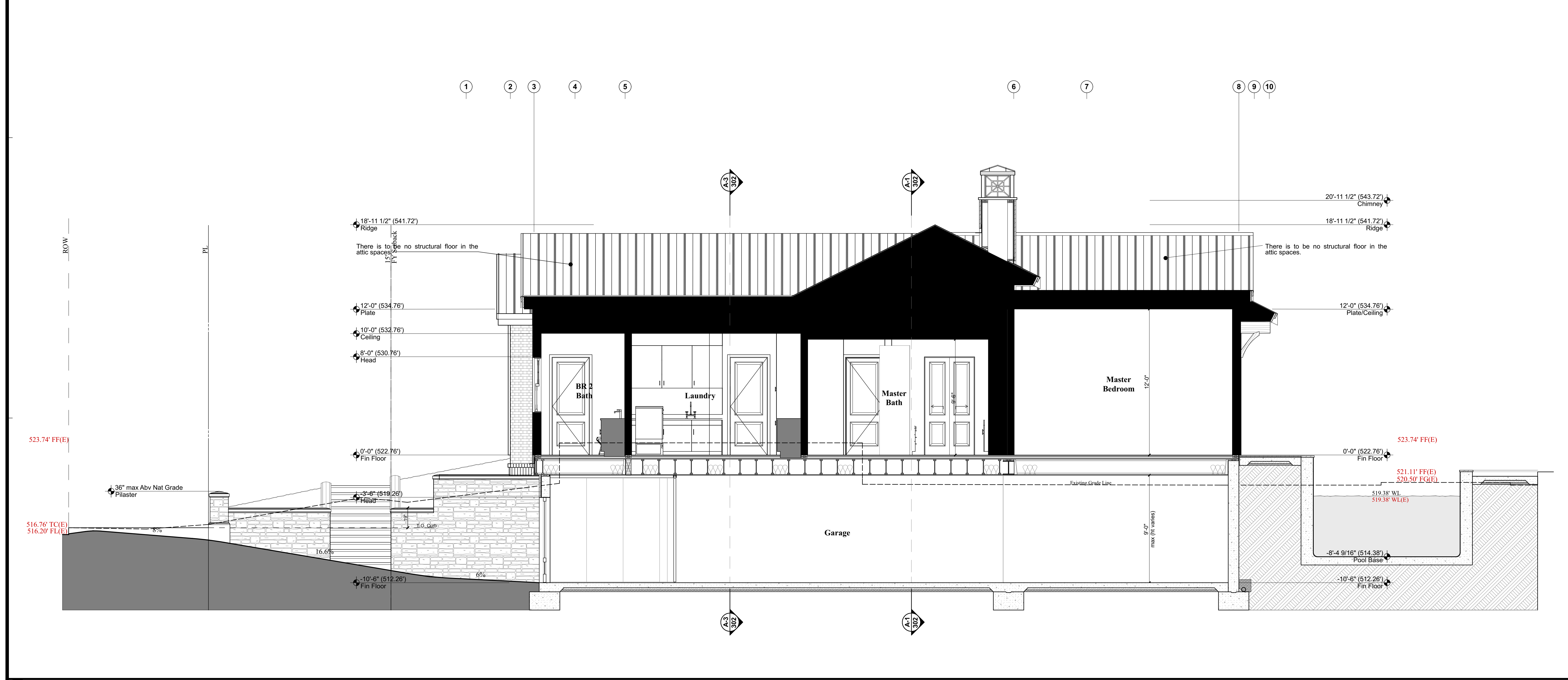
PROJECT NO: 112020
MODEL FILE:
DRAWN BY: R.A. Hamerly
CHKD BY: R.A. Hamerly
COPYRIGHT:
R.A. Hamerly AIA Architect, Inc.
SHEET TITLE:
Basement Floor Plan

A-201

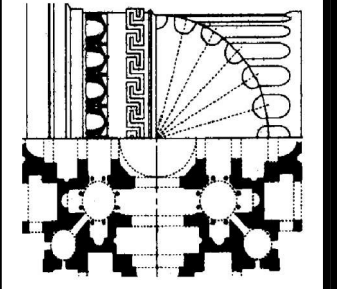




A-1 BUILDING SECTION 1/4" = 1' - 0"



A-3 BUILDING SECTION 1/4" = 1' - 0"



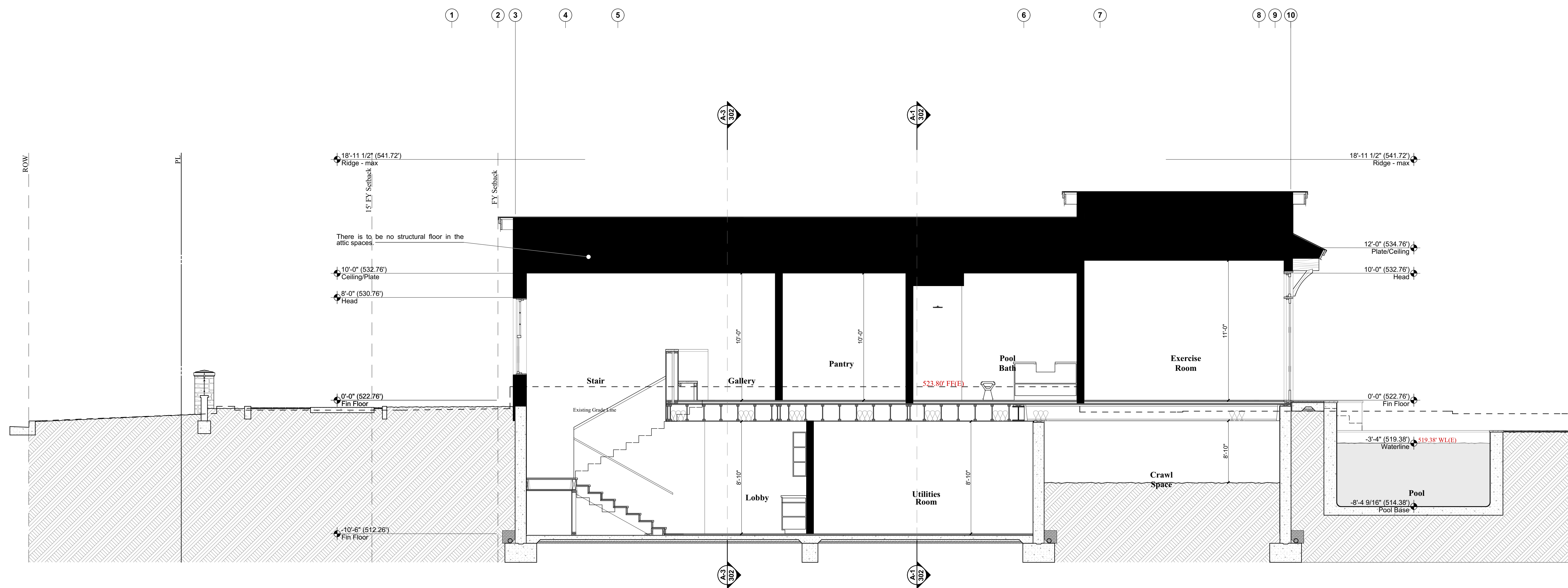
MARK	DATE	DESCRIPTION
A	10/20/21	Admin Review

The Drawings and/or accompanying specifications and the designs and ideas therein, as instruments of service, are the exclusive property of Randal A. Hamerly, AIA Architect, Inc. Their use and publication shall be limited to the project and site for which they were prepared. Any reproduction or publication by any method in whole or in part is prohibited except by written consent from the Architect. Title and copyright to these plans and/or specifications shall remain with Randal A. Hamerly, AIA Architect, Inc. without prejudice, and visual contact with this document shall constitute a violation of the architectural profession's code of ethics.

630 S PARISH PLACE
A New Custom Single-Family Residence
630 S Parish Place
Burbank, CA 91506

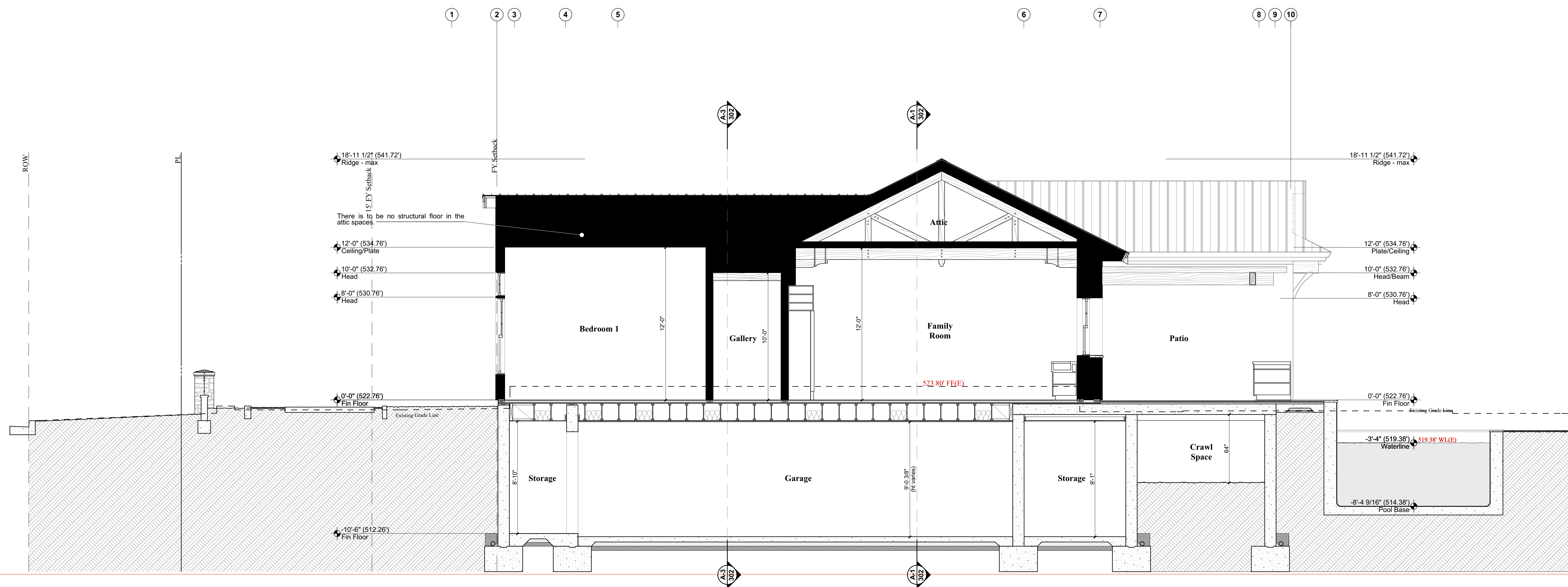


PROJECT NO: 112020
MODEL FILE:
DRAWN BY: R.A. Hamerly
CHKD BY: R.A. Hamerly
COPYRIGHT: R.A. Hamerly AIA Architect, Inc.
SHEET TITLE: Building Sections



A-1 BUILDING SECTION

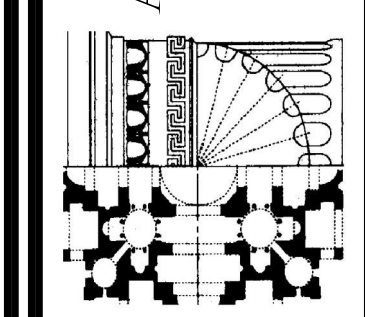
1/4" = 1' - 0"



A-3 BUILDING SECTION

1/4" = 1' - 0"

R.A. HAMERLY
AIA ARCHITECT, INC.
7353 Silkwood Lane
Highland, CA 92346
909-862-5533
rharchi@sbcglobal.net



MARK	DATE	DESCRIPTION
A	11/20/20	Admin Review

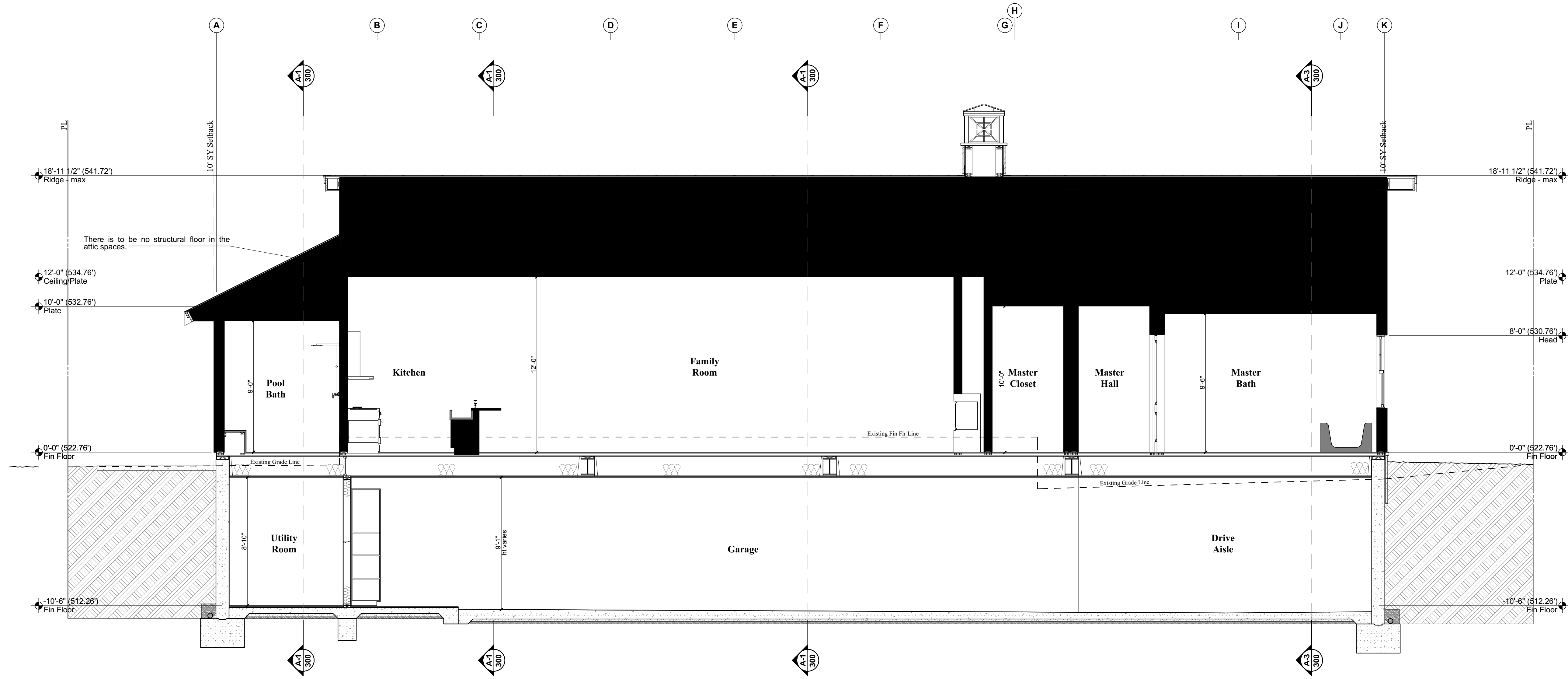
The Drawings and/or accompanying specifications and the designs and ideas therein, as instruments of service, are the exclusive property of Randal A. Hamerly, AIA Architect, Inc. Their use and publication shall be prohibited except by written consent from the Architect. Title and copyright to these plans and/or specifications shall remain with Randal A. Hamerly, AIA Architect, Inc. without prejudice, and visual contact with this information shall constitute a violation of the professional code of ethics.

630 S PARISH PLACE
A New Custom Single-Family Residence
630 S Parish Place
Burbank, CA 91506



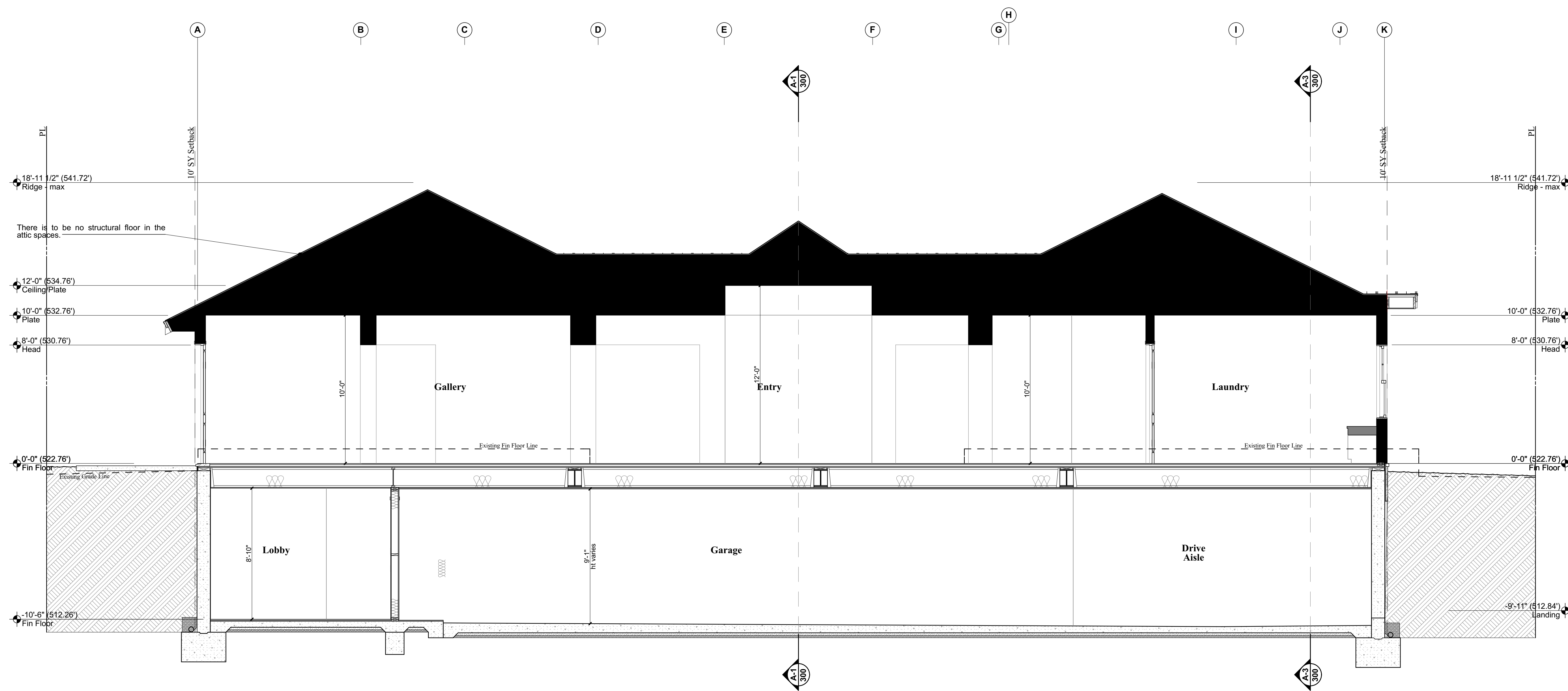
PROJECT NO: 112020
MODEL FILE:
DRAWN BY: R.A. Hamerly
CHKD BY: R.A. Hamerly
COPYRIGHT: R.A. Hamerly AIA Architect, Inc.
SHEET TITLE: Building Sections

A-301



A-1 BUILDING SECTION

1/4" = 1' - 0"



A-3 BUILDING SECTION

1/4" = 1' - 0"

MARK	DATE	DESCRIPTION
A	10/20/21	Admin Review

The Drawings and/or accompanying specifications and the designs and ideas therein, as instruments of service, are the exclusive property of Rendall A. Hamerly, AIA Architect, Inc. Their use and publication shall be prohibited except by written consent from the Architect. Title and copyright to these plans and/or specifications shall remain with Rendall A. Hamerly, AIA Architect, Inc. without prejudice, and visual contact with this information shall constitute a violation of the applicable provisions of the law.

630 S PARISH PLACE
A New Custom Single-Family Residence
630 S Parish Place
Burbank, CA 91506



PROJECT NO: 112020
MODEL FILE:
DRAWN BY: R.A. Hamerly
CHKD BY: R.A. Hamerly
COPYRIGHT:
R.A. Hamerly AIA Architect, Inc.
SHEET TITLE:
Building Sections

A-302

ELEVATION NOTES LEGEND

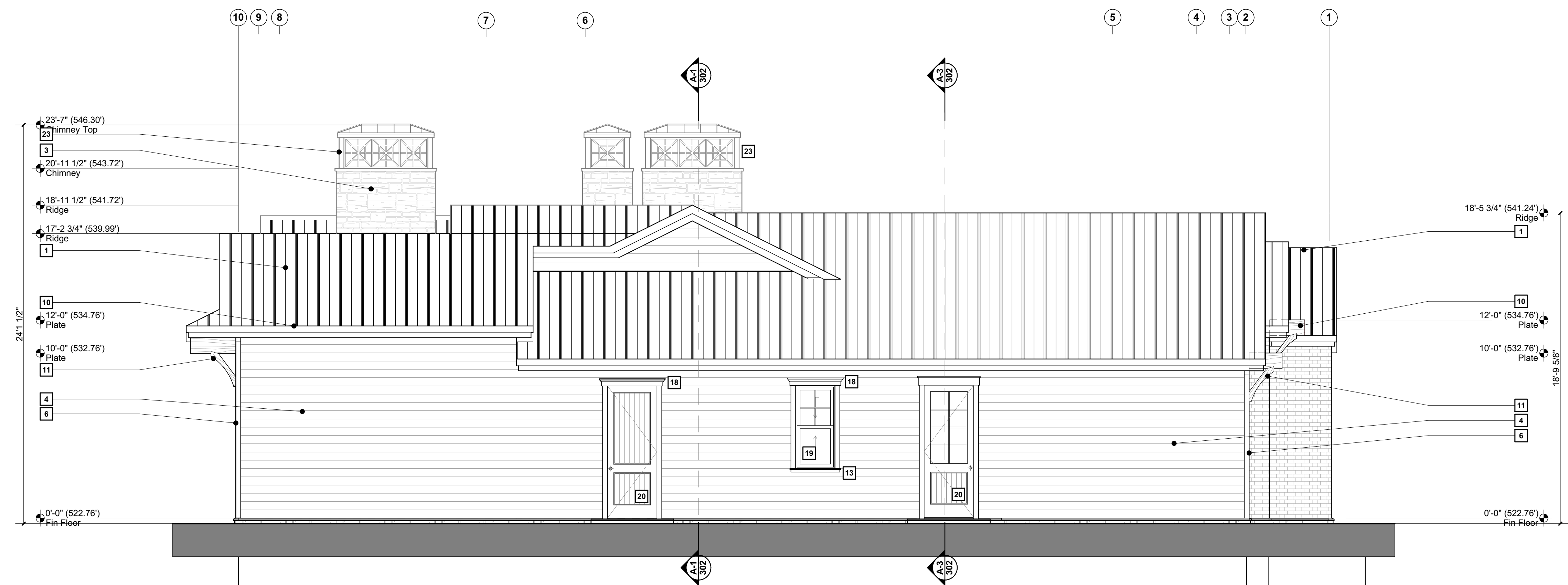
- 1 Roofing: Pac Clad 'Redi-Roof' Metal Standing Seam Roofing; Flat panels with no offsets; 1.375" Seam, 16"W Panels, 24 Ga.; Masket Grey; SRI 33, 3 Yr Exp - 0.31.
- 2 Veneer: Thin Texas Limestone Veneer; 1.25"-1.5" Th; Sonoma Pattern, Color: Buff Leathers; Benjamin Moore.
- 3 Veneer: Thin Brick Veneer; 3/4" x 2 1/4" x 8"; Extruded Brick; Painted Finish; 'White Dove' by Benjamin Moore.
- 4 Siding: 1x6 Clear DF Ship Lap Siding; Paint Grade Material; 'White Dove' by Benjamin Moore.
- 5 Trim: 2x6 Clear DF Trim Band; Paint grade Material, Sanded Smooth; 'White Dove' by Benjamin Moore.
- 6 Trim: 1x4 Clear DF Corner Trim; Paint Grade Material, Sanded Smooth; 'White Dove' by Benjamin Moore.
- 7 Trim: Rowlock Course Brick Accent; 1 1/2" Th x 2 1/4" x 3"; Extruded Brick; Painted Finish; 'White Dove' by Benjamin Moore.
- 8 Base: Trim Rowlock Course over Soldier Course Brick Accent; Rowlock: 1 1/2" Th x 2 1/4" x 3"; Soldier: 3/4" Th x 2 1/4" x 8"; 50% Stagger between courses; Extruded Brick; Painted Finish; 'White Dove' by Benjamin Moore.
- 9 Entry Trim: Header Course over Rowlock Course over Soldier Course Brick Accent; Header: 2" Th x 2 1/4" H x 3" W, Rowlock: 1 1/2" Th x 3" H x 2 1/4" W, Soldier: 3/4" Th x 8" H x 2 1/4" W, 50% Stagger between courses; Extruded Brick; Painted Finish; 'White Dove' by Benjamin Moore.
- 10 Fascia: 2x8 Clear DF Fascia with 2x6 Clear DF Trim; Paint Grade Material, Sanded Smooth; 'White Dove' by Benjamin Moore.
- 11 Knee Brace: 6x12 Clear DF Outrigger with 6x6 x 24" H Clear DF Shaped Knee Brace; Length of outrigger varies; Paint Grade Material, Lightly scraped finish, Sanded Smooth; 'White Dove' by Benjamin Moore.
- 12 Sill: Brick Watertable Sill; Rowlock Course; 2" Th x 2 1/4" W x 3" H, Sloped 1/2"; Back face cut vertical at mortar bed; Extruded Brick; Painted Finish; 'White Dove' by Benjamin Moore.
- 13 Sill: Wood Watertable; 1x Clear DF, sloped 1/2" with 3/4" Projection over 1x4 Clear DF Apron; Paint Grade Material, Sanded Smooth; 'White Dove' by Benjamin Moore.
- 14 Pedestal: Column Base with Thin Texas Limestone Veneer; 24" Sq x 24" H (dims to face of finish); Veneer: 1.25"-1.5" Th; Sonoma Pattern, Color: Buff Leathers; Rough, Split-Face Finish; Cap: 2" Th Buff Leathers with honed top surface and chiseled edge; Lap 3/4" past face of veneer; Truss: Beam: 6x12 DF#1, Lightly scraped; Sanded smooth; Trelis: 4x6 DF @ 12" OC; Paint Grade Material; 'White Dove' by Benjamin Moore.
- 15 Post: 4-6x6 DF#1 Wood Posts; Provide 1x8 DF Base Trim to conceal countersunk bolts; Lightly scraped; Sanded smooth; Paint Grade Material; 'White Dove' by Benjamin Moore.
- 16 Lintel: Soldier Course Brick Accent; 1" Th x 8" H x 2 1/4" W; Extruded Brick; Painted Finish; 'White Dove' by Benjamin Moore.
- 17 Lintel: Wood Lintel; 5 3/4" H x 3" P; Paint Grade Material, Sanded Smooth; 'White Dove' by Benjamin Moore.
- 18 Window: Aluminum Clad Wood Window by Sierra Pacific; Ext: Color Stay 001, 'White', Int: Ultra Coat 'White'; See Door Schedule for details.
- 19 Door: Aluminum Clad Wood Door by Sierra Pacific; Ext: Color Stay 001, 'White', Int: Ultra Coat 'White'; See Door Schedule for details.
- 20 Gate: Single-leaf, Tube Steel Gate; Provide basket-weave mill panels of 3/4" W sheet steel with 5/8" x 5/8" grid modules; Provide fine mesh security screen at interior face; Painted finish; See Door Schedule for Details.
- 21 Chimney Shroud: Manufactured chimney shroud, 'Siema' model by SPJ Lighting; 36"x60"; Tight lattice screen; Dark Rustic Iron (DRI) finish; [800-469-3637]
- 22
- 23



A West Elevation

A-1 EXTERIOR ELEVATIONS

1/4" = 1' - 0"

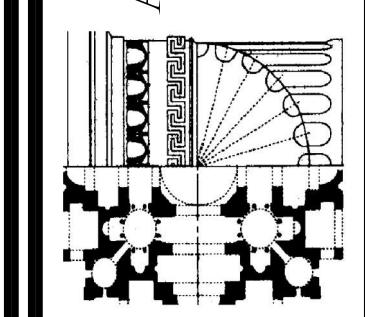


B North Elevation

A-3 EXTERIOR ELEVATIONS

1/4" = 1' - 0"

**R.A. HAMERLY
AIA ARCHITECT, INC.**
7452 Silkwood Lane
Highland, CA 92346
909-862-5533
rhamerly@shgglobal.net



MARK	DATE	DESCRIPTION
A	10/20/20	Initial

The Drawings and/or accompanying specifications and the designs and ideas therein, as instruments of service, are the exclusive property of Rendall A. Hamerly, AIA Architect, Inc. Their use and publication shall be prohibited except by written consent from the Architect. Title and copyright to these plans and/or specifications shall remain with Rendall A. Hamerly, AIA Architect, Inc. without prejudice, and visual contact with this information shall constitute a violation of the professional code of ethics.

630 S PARISH PLACE
A New Custom Single-Family Residence
630 S Parish Place
Burbank, CA 91506

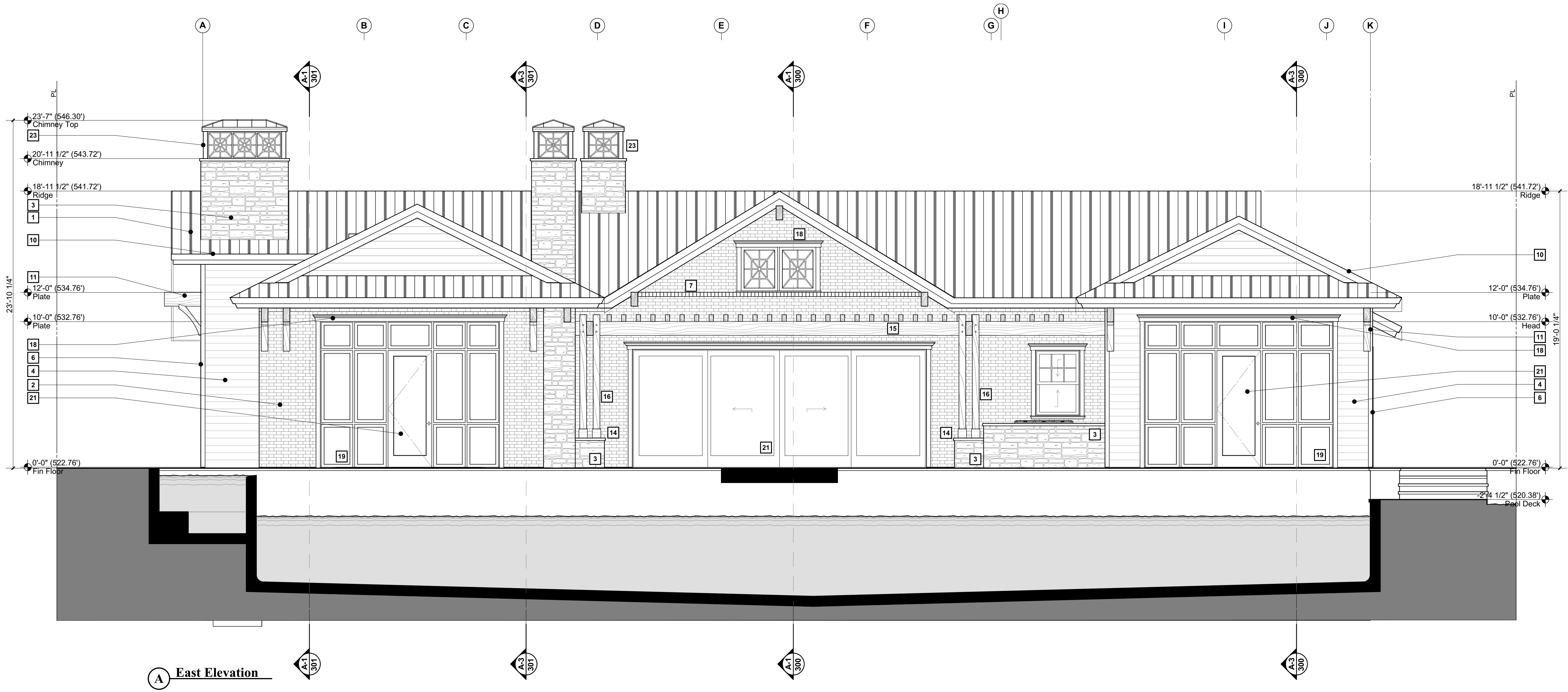


PROJECT NO: 112020
MODEL FILE:
DRAWN BY: R.A. Hamerly
CHKD BY: R.A. Hamerly
COPYRIGHT:
R.A. Hamerly AIA Architect, Inc.
SHEET TITLE:
Exterior Elevations

A-400

ELEVATION NOTES LEGEND

- 1 Roofing: Pac Clad 'Redi-Roof' Metal Standing Seam Roofing; Flat panels with no offsets; 1.375" Seam, 16"W Panels, 24 Ga.; Musket Grey; SRI 3, 3Yr Exp = 0.31.
- 2 Veneer: Thin Brick Veneer; 3/4" x 2 1/4" x 8"; Extruded Brick; Painted Finish; 'White Dove' by Benjamin Moore.
- 3 Veneer: Thin Texas Limestone Veneer; 1.25"-1.5"Th; Sonoma Pattern; Color: Buff Leaders; Rough, Split-Face Finish; Salado Stone [844-817-8663]
- 4 Siding: 1x6 Clear DF Ship Lap Siding; Paint Grade Material; 'White Dove' by Benjamin Moore.
- 5 Trim: 2x6 Clear DF Trim Band; Paint grade Material, Sanded Smooth; 'White Dove' by Benjamin Moore.
- 6 Trim: 1x4 Clear DF Corner Trim; Paint Grade Material, Sanded Smooth; 'White Dove' by Benjamin Moore.
- 7 Trim: Rowlock Course Brick Accent; 1 1/2"Th x 2 1/4" x 3"; Extruded Brick; Painted Finish; 'White Dove' by Benjamin Moore.
- 8 Base: Trim Rowlock Course over Soldier Course Brick Accent; Rowlock: 1 1/2"Th x 2 1/4" x 3"; Soldier: 3/4"Th x 2 1/4" x 8"; 50% Stagger between courses; Extruded Brick; Painted Finish; 'White Dove' by Benjamin Moore.
- 9 Entry Trim: Header Course over Rowlock Course Brick Accent; Header: 2"Th x 2 1/4" x 3"W, Rowlock: 1 1/2"Th x 3"Th x 2 1/4"W, Soldier: 3/4"Th x 8"Th x 2 1/4"W, 50% Stagger between courses; Extruded Brick; Painted Finish; 'White Dove' by Benjamin Moore.
- 10 Fascia: 2x8 Clear DF Fascia with 2x6 Clear DF Trim; Paint Grade Material, Sanded Smooth; 'White Dove' by Benjamin Moore.
- 11 Knee Brace: 6x12 Clear DF Outrigger with 6x6 x 24"H Clear DF Shaped Knee Brace; Length of outrigger varies; Paint Grade Material, Lightly scraped finish, Sanded Smooth; 'White Dove' by Benjamin Moore.
- 12 Sill: Brick Waterable Sill; Rowlock Course; 2"Th x 2 1/4"W x 3"H, Sloped 1/2", Back face cut vertical at mortar bed; Extruded Brick; Painted Finish; 'White Dove' by Benjamin Moore.
- 13 Sill: Wood Waterable; 1x Clear DF, sloped 1/2" with 3/4" Projection over 1x4 Clear DF Apron; Paint Grade Material, Sanded Smooth; 'White Dove' by Benjamin Moore.
- 14 Pedestal: Column Base with Thin Texas Limestone Veneer; 24"Sq x 24"H (dims to face of finish); Veneer: 1.25"-1.5"Th; Sonoma Pattern; Color: Buff Leaders; Rough, Split-Face Finish; Cap: 2"Th Buff Leaders with honed top surface and chisled edge; Lap 3/4" past face of veneer; Trelis: Beam: 6x12 DF#1; Lightly scraped; Sanded Smooth; Trelis: 4x6 DF @ 12"OC; Paint Grade Material; 'White Dove' by Benjamin Moore.
- 15 Post: 4-6x6 DF#1 Wood Posts; Provide 1x8 DF Base Trim to conceal countersunk bolts; Lightly scraped; Sanded smooth; Paint Grade Material; 'White Dove' by Benjamin Moore.
- 16 Lintel: Soldier Course Brick Accent; 1"Th x 8"H x 2 1/4"W; Extruded Brick; Painted Finish; 'White Dove' by Benjamin Moore.
- 17 Lintel: Wood Lintel: 5 3/4"H x 3"P; Paint Grade Material, Sanded Smooth; 'White Dove' by Benjamin Moore.
- 18 Window: Aluminum Clad Wood Window by Sierra Pacific; Ext: Color Stay 001, 'White', Int: Ultra Coat 'White'; See Window Schedule for details.
- 19 Door: Solid-Core Plank Door; Paint Grade Material; See Door Schedule for Details.
- 20 Door: Aluminum Clad Wood Door by Sierra Pacific; Ext: Color Stay 001, 'White', Int: Ultra Coat 'White'; See Door Schedule for details.
- 21 Gate: Single-leaf, Tube Steel Gate; Provide basket-weave mesh panels of 3/4"W sheet steel with 5/8"x5" grid modules; Provide fine mesh security screen at interior face; Painted finish; See Door Schedule for Details.
- 22 Chimney Shroud: Manufactured chimney shroud, 'Siema' model by SPJ Lighting; 36"x60"; Tight light screen; Dark Rustic Iron (DRI) finish; [800-469-3637]
- 23



A East Elevation

A-1 EXTERIOR ELEVATIONS

1/4" = 1' - 0"

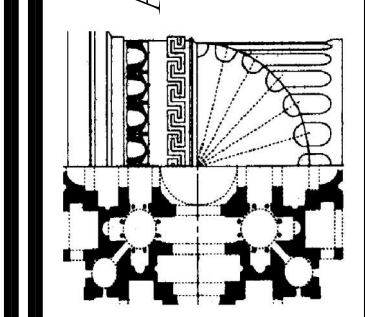


B South Elevation

A-3 EXTERIOR ELEVATIONS

1/4" = 1' - 0"

**R.A. HAMERLY
AIA ARCHITECT, INC.**
7352 Silkwood Lane
Highland, CA 92346
909-862-5533
rhamerly@sbeglobal.net



MARK	DATE	DESCRIPTION
A	10/20/21	Admin Review

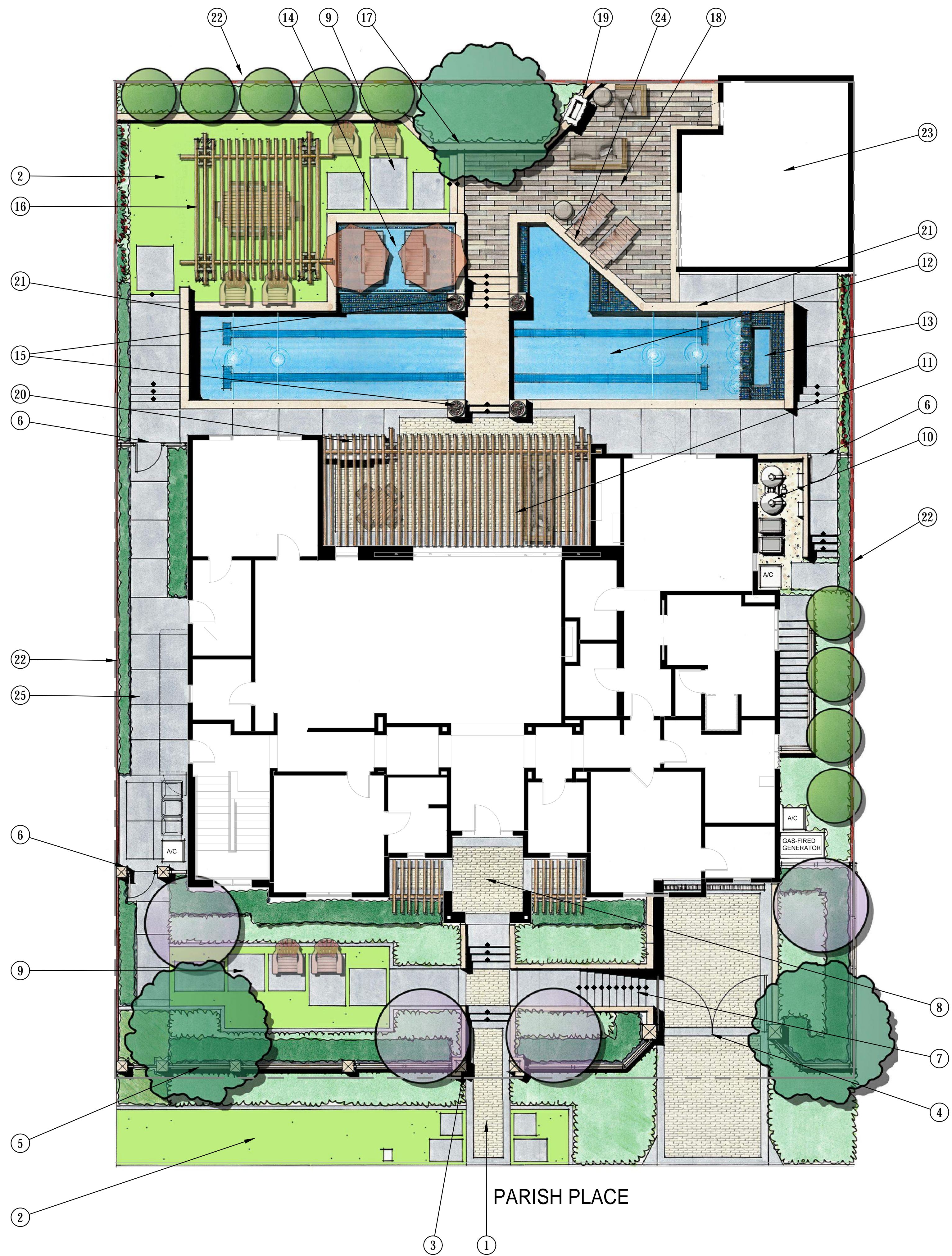
The drawings and/or accompanying specifications and the designs and ideas therein, as instruments of service, are the exclusive property of Rendall A. Hamerly, AIA Architect, Inc. Their use and publication shall be prohibited except by written consent from the Architect. Title and copyright to these plans and/or specifications shall remain with Rendall A. Hamerly, AIA Architect, Inc. without prejudice, and visual contact with this information shall constitute a violation of the professional code of ethics.

630 S PARISH PLACE
A New Custom Single-Family Residence
630 S Parish Place
Burbank, CA 91506



PROJECT NO: 112020
MODEL FILE:
DRAWN BY: R.A. Hamerly
CHKD BY: R.A. Hamerly
COPYRIGHT:
R.A. Hamerly AIA Architect, Inc.
SHEET TITLE:
Exterior Elevations

A-401



FEATURE LEGEND:

- ① Pedestrian Main Entry.
- ② Artificial Turf.
- ③ Dial-Up Phone and Mail Box.
- ④ Vehicular Gates with Motorized Actuators.
- ⑤ Retaining Wall with Low Tubular Steel Fence.
- ⑥ Access gate (To Meet Pool Code Requirements Where Necessary)
- ⑦ Staircase Access to Driveway.
- ⑧ Enhanced Porch.
- ⑨ Stepping Pads at Artificial Turf.
- ⑩ Pool Equipment.
- ⑪ Covered Patio with Wood Lattice (per Architect).
- ⑫ Lap Pool.
- ⑬ Spa with Tiled Headwall and Weirs.
- ⑭ Baja Shelf.
- ⑮ Fire Bowls.
- ⑯ Shade Structure with Vine Pockets.
- ⑰ Seatwall with Veneer to Match Architecture.
- ⑱ Porcelain Wood Grain Paver on Pedestal.
- ⑲ Existing Cabana Fireplace to Remain.
- ⑳ BBQ Island.
- ㉑ Laminar Stream Deck Jet Arching Into Pool (total of 8).
- ㉒ Renovated 8' High Wood Fencing with Horizontal Planks and Steel 'I' Beam Posts.
- ㉓ Existing Cabana to Remain.
- ㉔ Existing Underwater Window Below Deck Edge.
- ㉕ Sleeved Temporary Dog Fence Enclosure.

PLANT PALETTE:

TREES

PRIMARY THEME AND BACKGROUND TREE

- Olea europaea* 'Wilsonii' • Fruitless Wilson Olive

SMALL FLOWERING ACCENT TREE

- Cercis occidentalis* • Western Redbud
- Solanum elaeagnifolium* • Potato Tree

FRUIT TREES

- Prunus salicina* 'Santa Rosa' • Santa Rosa Plum
- Prunus persica* 'Arctic Star' • Arctic Star White Nectarine
- Psidium guajava* 'Ruby Supreme' • Ruby Supreme Guava
- Citrus aurantifolia* 'Bears' • Bears Seedless Lime
- Citrus limetifolius* 'Persian Limu Shirin' • Persian Sweet Lemon

ESPALIER

- Malus domestica* 'Anna' • Anna Semi Dwarf Apple Espalier
- Prunus persica* 'Babcock' • Peach Espalier

SHRUBS AND GROUNDCOVER

BACKGROUND

- Prunus c.* 'Bright 'N Tight' • Bright 'N Tight Carolina Cherry
- Pittosporum tenuifolium* 'Silver Sheen' • Silver Sheen Kohuhu

MIDGROUND

- Buxus microphylla japonica* • Japanese Boxwood
- Rosa* 'Iceberg' • White Iceberg Rose
- Vaccinium corymbosum* 'ZF06-043' • Peach Sorbet Blueberry
- Salvia* Species • Sage

FOREGROUND

- Festuca o.* 'Glauca' • Blue Fescue
- Stachys byzantina* • Lamb's-Ear
- Trachelospermum jasminoides* • Star Jasmine
- Cerastium tomentosum* • Snow-in-Summer

VINE

- Wisteria sinensis* 'Texas White' • White Wisteria

