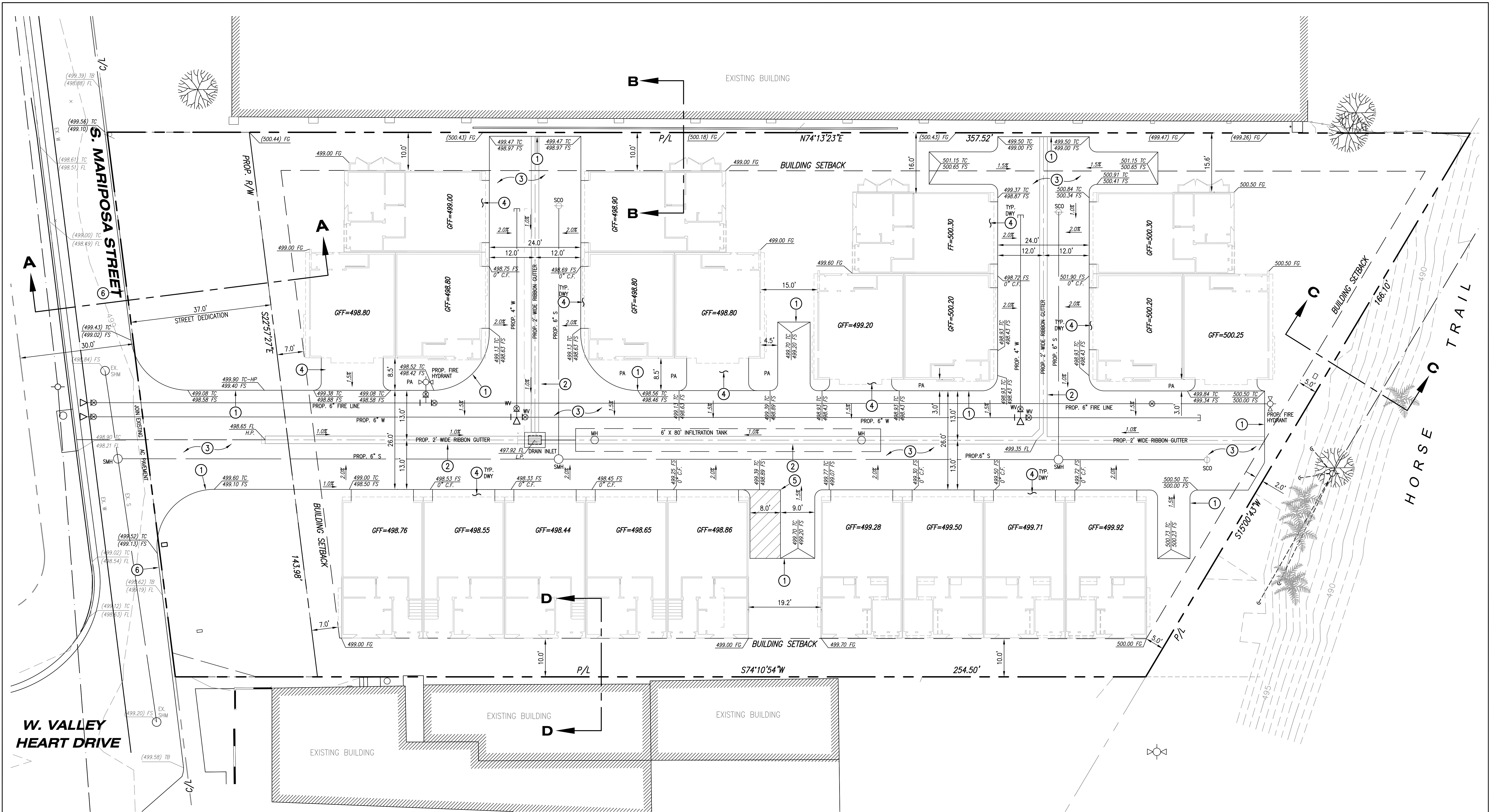


SCALE: 1"=10' DATE: 10/26/22

MULTI-FAMILY TOWNHOMES
BUTTERFLY GARDENS LLC

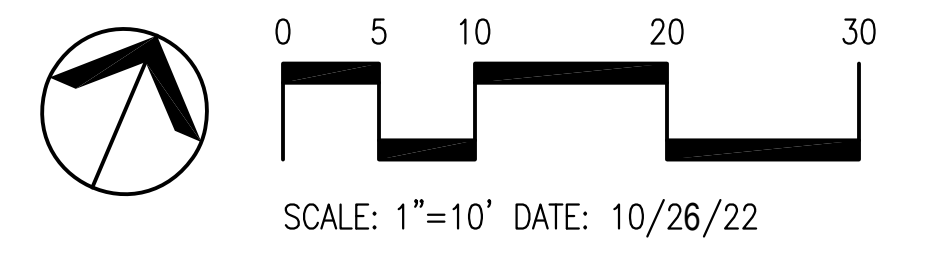
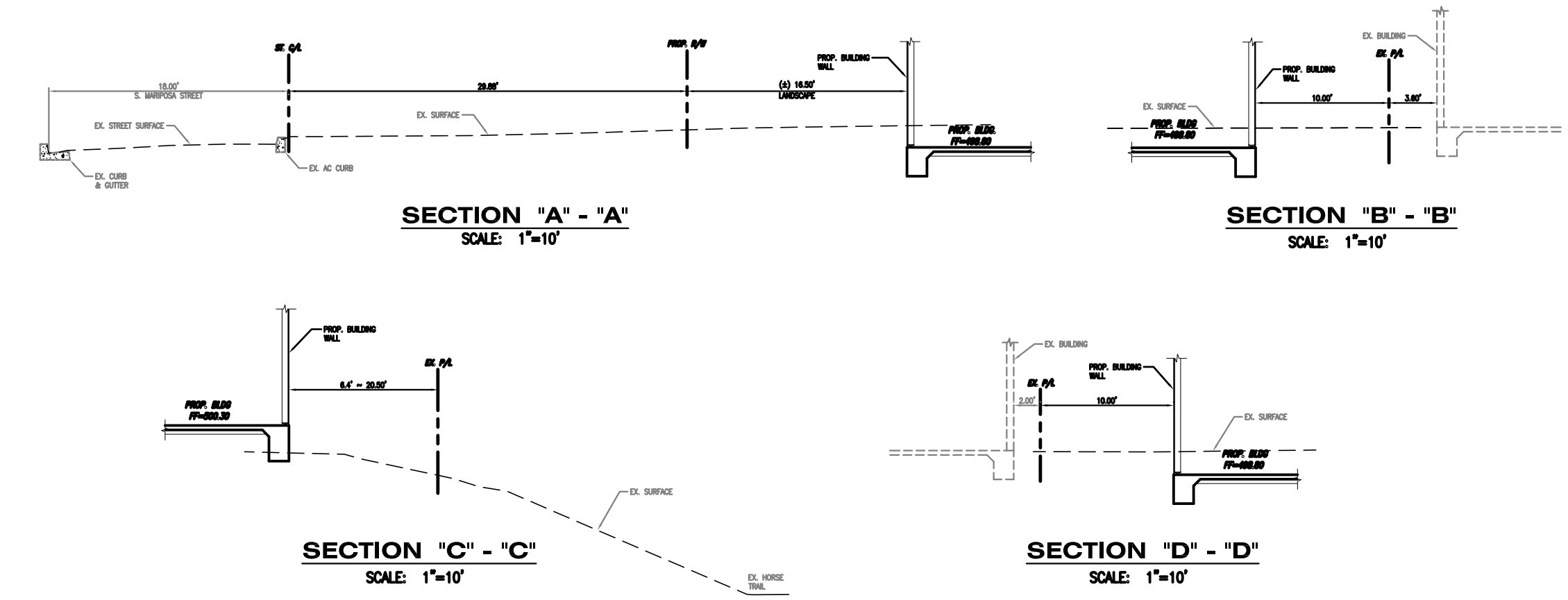
ON-SITE PRIVATE SEWER & WATER PLAN
910 SOUTH MARIPOSA STREET, BURBANK, CALIFORNIA

KHR ASSOCIATES
 CONSULTING ENGINEERS/SURVEYORS/PLANNERS
 17530 Van Karman Avenue - Suite 200 Tel (949) 756-6440
 Irvine, California 92614



- CONSTRUCTION NOTES:**
- 1 CONSTRUCT 6-INCH PCC CURB ONLY.
 - 2 CONSTRUCT 2-FOOT WIDE 8-INCH THICK PCC V-GUTTER.
 - 3 CONSTRUCT 4-INCH THICK ASPHALT CONCRETE PAVEMENT.
 - 4 CONSTRUCT 4-INCH THICK PCC DRIVEWAY PAVEMENT.
 - 5 PAINT 4-INCH WIDE SOLID BLUE ACCESSIBLE PARKING STALL STRIPING AND ACCESSIBLE SYMBOL.
 - 6 PROTECT IN PLACE OF EXISTING AC CURB.

- LEGEND:**
- CONSTRUCTION NOTE REFERENCE
 - NEW CONCRETE PAVEMENT
 - NEW ASPHALT CONCRETE PAVEMENT



MULTI-FAMILY TOWNHOMES
BUTTERFLY GARDENS LLC

PRELIMINARY GRADING AND DRAINAGE PLAN
910 SOUTH MARIPOSA STREET, BURBANK, CALIFORNIA

KHR ASSOCIATES
 CONSULTING ENGINEERS/SURVEYORS/PLANNERS
 17530 Von Karman Avenue - Suite 200 Tel (949) 756-6440
 Irvine, California 92614