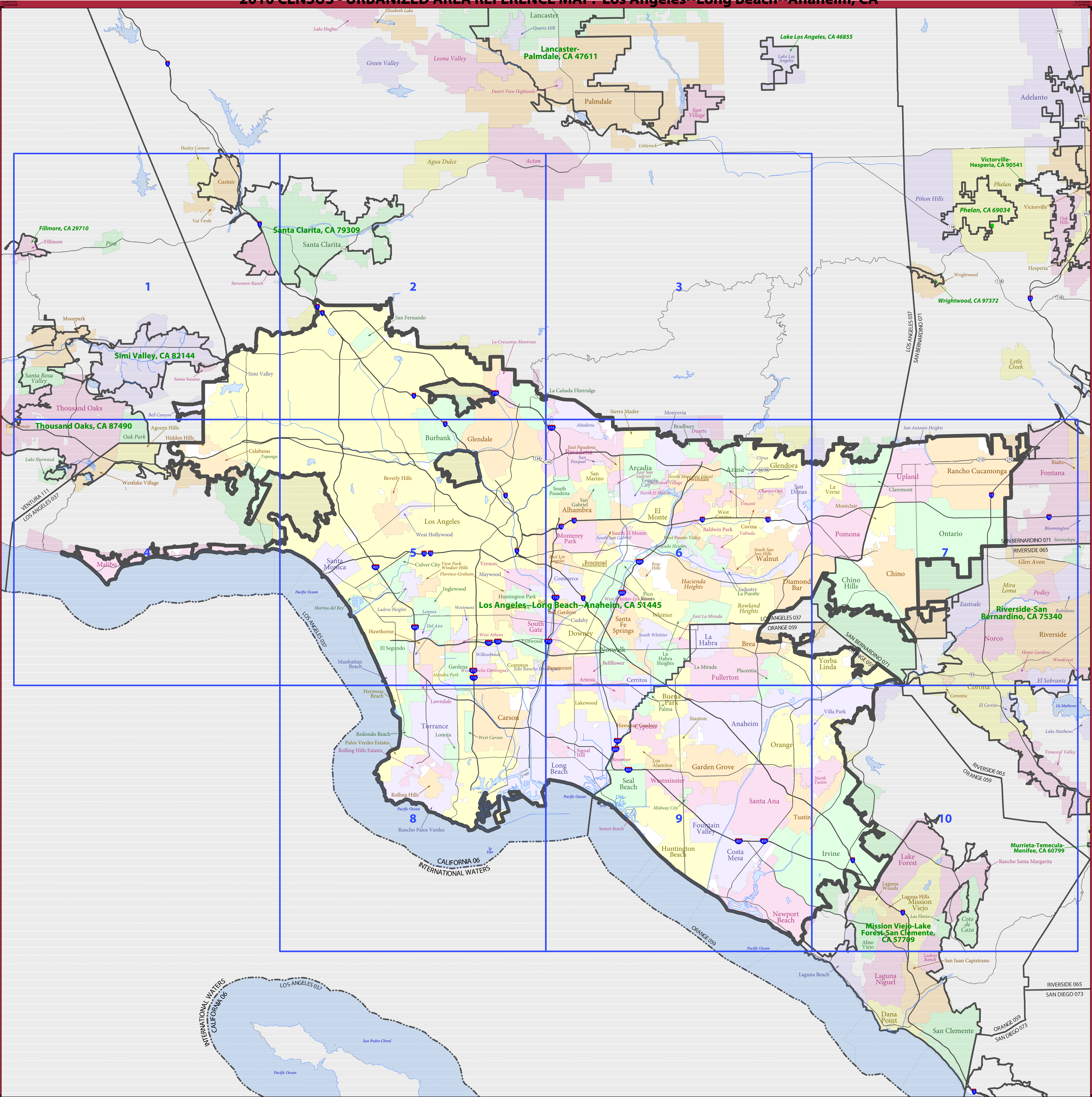


2010 CENSUS - URBANIZED AREA REFERENCE MAP: Los Angeles--Long Beach--Anaheim, CA



LEGEND

SYMBOL DESCRIPTION	SYMBOL	LABEL STYLE
International	--- --	CANADA
Federal American Indian Reservation	L'ANSE RES 1880
Off-Reservation Trust Land	T1880
Urbanized Area	█	Dover, DE 24580
Urban Cluster	█	Toolee, VT 88057
State (or statistically equivalent entity)	--- --	NEW YORK 36
County (or statistically equivalent entity)	---	ERIE 029
Minor Civil Division (MCD) ^{1,2}	---	Bristol town 07485
Consolidated City	MILFORD 47500
Incorporated Place ^{1,3}	Davis 18100
Census Designated Place (CDP) ²	Incline Village 35100

DESCRIPTION	SYMBOL	DESCRIPTION	SYMBOL
Interstate	— 2 —	Water Body	■ Pleasant Lake
U.S. Highway	— 2 —	Military	■ Fort Belvoir
State Highway	— 2 —	Outside Subject Area	■
Other Road	—		
Railroad	—+—		
Perennial Stream	—+—		
Intermittent Stream	—+—		

Where international, state, county, and/or MCD boundaries coincide, the map shows the boundary symbol for only the highest-ranking of these boundaries.

1 A ** following an MCD name denotes a false MCD. A ** following a place name indicates that a false MCD exists with the same name and FIPS code as the place; the false MCD label is not shown.

2 MCD boundaries are shown in the following states in which some or all MCDs function as general-purpose governmental units: Connecticut, Illinois, Indiana, Kansas, Maine, Massachusetts, Michigan, Minnesota, Missouri, Nebraska, New Hampshire, New Jersey, New York, North Dakota, Ohio, Pennsylvania, Rhode Island, South Dakota, Vermont, and Wisconsin. (Note that Illinois and Nebraska have some counties covered by nongovernmental precincts and Missouri has most counties covered by nongovernmental townships.)

3 Place label color corresponds to the place fill color.
Label colors: Davis Davis Davis Davis Davis

COUNTIES IN SUBJECT URBANIZED AREA

06037	Los Angeles
06059	Orange
06071	San Bernardino
06111	Ventura

All legal boundaries and names are as of January 1, 2010. Urban areas are based on results from the 2010 Decennial Census. The boundaries shown on this map are for Census Bureau statistical data collection and tabulation purposes only; their depiction and designation for statistical purposes does not constitute a determination of jurisdictional authority or rights of ownership or entitlement.

Geographic Vintage: 2010 Census (reference date: January 1, 2010)
Data Source: U.S. Census Bureau's MAI/TIGER database (TAB10)
Map Created by Geography Division: March 11, 2012

U.S. DEPARTMENT OF COMMERCE Economics and Statistics Administration U.S. Census Bureau

Projection: Albers Equal Area Conic
Datum: NAD 83
Spheroid: GRS 80
1st Standard Parallel: 34 06 27
2nd Standard Parallel: 40 25 20
Central Meridian: -119 18 20
Latitude of Projection's Origin: 32 31 43
False Easting: 0
False Northing: 0

The plotted map scale is 1:99012

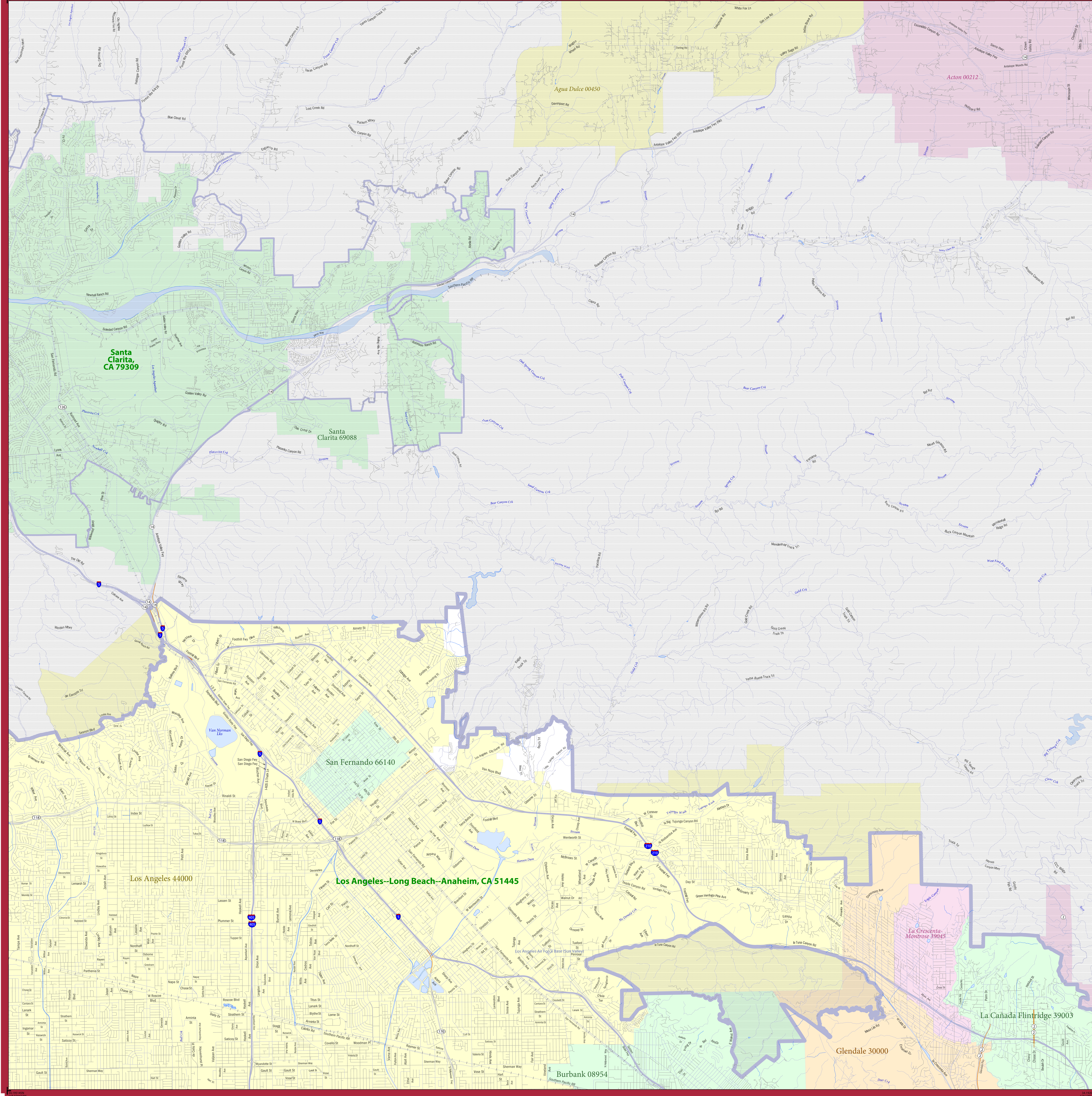
INDEX SHEET
Total Sheets: 11
Index Sheets: 1
Parent Sheets: 10

UA NAME: Los Angeles--Long Beach--Anaheim, CA
UA CODE: 51445
ENTITY TYPE: Urbanized Area (UA)
ST: California (06)

2010 CENSUS UA REF MAP INDEX
21105144500

ATTACHMENT A

2010 CENSUS - URBANIZED AREA REFERENCE MAP: Los Angeles--Long Beach--Anaheim, CA



LEGEND

SYMBOL DESCRIPTION	SYMBOL	LABEL STYLE
International	--- --	CANADA
Federal American Indian Reservation	L'ANSE RES 1880
Off-Reservation Trust Land	T1880
Urbanized Area	█	Dover, DE 24580
Urban Cluster	█	Toole, VT 88057
State (or statistically equivalent entity)	---	NEW YORK 36
County (or statistically equivalent entity)	---	ERIE 029
Minor Civil Division (MCD) ^{1,2}	---	Bristol town 07485
Consolidated City	MILFORD 47500
Incorporated Place ^{1,3}	Davis 18100
Census Designated Place (CDP) ²	Incline Village 35100

DESCRIPTION	SYMBOL	DESCRIPTION	SYMBOL
Interstate	—+—	Water Body	■ Pleasant Lake
U.S. Highway	—+—	Military	■ Fort Belvoir
State Highway	—+—	Outside Subject Area	■
Other Road	—+—		
Railroad	—+—		
Perennial Stream	—+—		
Intermittent Stream	—+—		

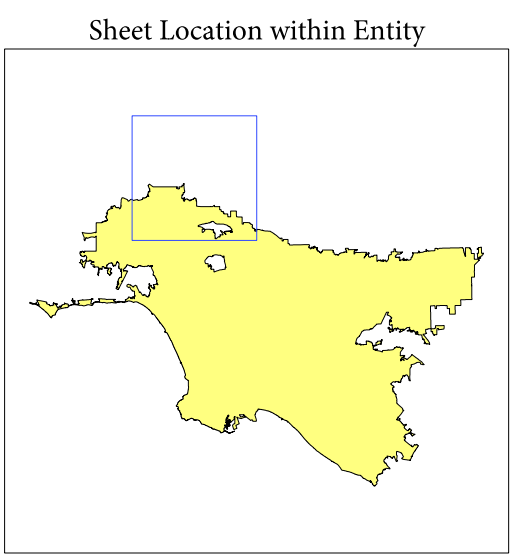
Where international, state, county, and/or MCD boundaries coincide, the map shows the boundary symbol for only the highest-ranking of these boundaries.

1 A ** following an MCD name denotes a false MCD. A *** following a place name indicates that a false MCD exists with the same name and FIPS code as the place; the false MCD label is not shown.

2 MCD boundaries are shown in the following states in which some or all MCDs function as general-purpose governmental units: Connecticut, Illinois, Indiana, Kansas, Maine, Massachusetts, Michigan, Minnesota, Missouri, Nebraska, New Hampshire, New Jersey, New York, North Dakota, Ohio, Pennsylvania, Rhode Island, South Dakota, Vermont, and Wisconsin. (Note that Illinois and Nebraska have some counties covered by nongovernmental precincts and Missouri has most counties covered by nongovernmental townships.)

3 Place label color corresponds to the place fill color.
Label colors: Davis Davis Davis Davis Davis

SUBJECT AREA COUNTIES ON MAP SHEET
06037 Los Angeles



All legal boundaries and names are as of January 1, 2010. Urban areas are based on results from the 2010 Decennial Census. The boundaries shown on this map are for Census Bureau statistical data collection and tabulation purposes only; their depiction and designation for statistical purposes does not constitute a determination of jurisdictional authority or rights of ownership or entitlement.

Geographic Vintage: 2010 Census (reference date: January 1, 2010)
Data Source: U.S. Census Bureau's MA/TIGER database (TAB10)
Map Created by Geography Division: March 11, 2012

Projection: Albers Equal Area Conic
Datum: NAD 83
Spheroid: GRS 80
1st Standard Parallel: 34 06 27
2nd Standard Parallel: 40 25 20
Central Meridian: -119 18 20
Latitude of Projection's Origin: 32 31 43
False Easting: 0
False Northing: 0

The plotted map scale is 1:48000



Key to Sheets

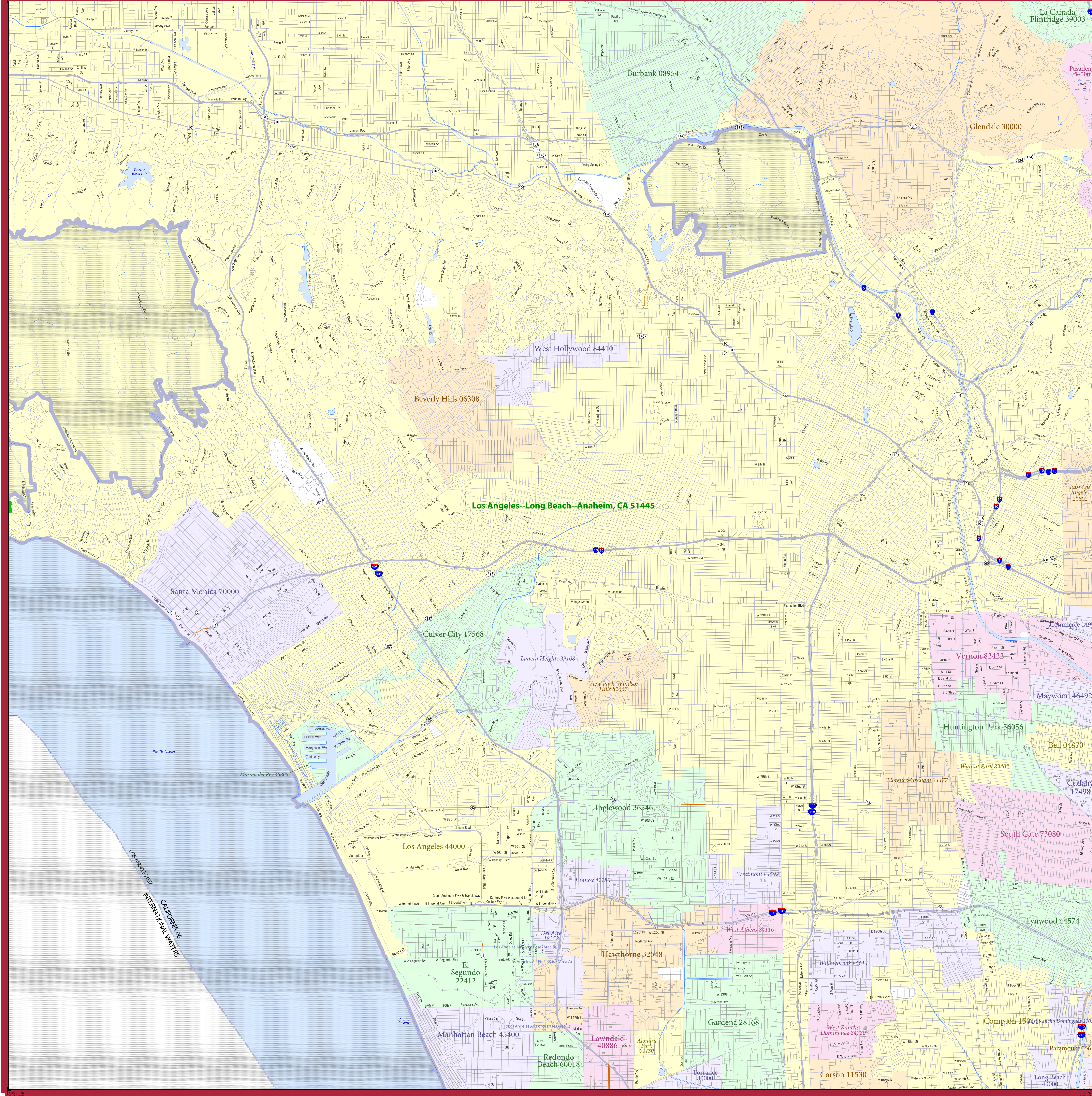
1	2	3
4	5	6

PARENT SHEET 2
Total Sheets: 11
Index Sheets: 1
Parent Sheets: 10

UA NAME: Los Angeles--Long Beach--Anaheim, CA
UA CODE: 51445
ENTITY TYPE: Urbanized Area (UA)
ST: California (06)

ATTACHMENT A

2010 CENSUS - URBANIZED AREA REFERENCE MAP: Los Angeles--Long Beach--Anaheim, CA



LEGEND

SYMBOL DESCRIPTION	SYMBOL	SYMBOL	SYMBOL	SYMBOL	SYMBOL
International	— — — — —	CANADA	— — — — —	NEW YORK 36	— — — — —
Federal American Indian Reservation	•••••	L'ANSE RES 1880	— — — — —	ERIE 029	— — — — —
Off-Reservation Trust Land	•••••	T1880	— — — — —	Bristol town 07485	— — — — —
Urbanized Area	■	Dover, DE 24580	— — — — —	MILFORD 47500	— — — — —
Urban Cluster	■	Toole, VT 88057	— — — — —	Davis 18100	— — — — —
State (or statistically equivalent entity)	— — — — —		— — — — —	Incline Village 35100	— — — — —
County (or statistically equivalent entity)	— — — — —		— — — — —		
Minor Civil Division (MCD) ^{1,2}	— — — — —		— — — — —		
Consolidated City	•••••		— — — — —		
Incorporated Place ³	■		— — — — —		
Census Designated Place (CDP) ²	■		— — — — —		

DESCRIPTION	SYMBOL	DESCRIPTION	SYMBOL
Interstate	— I —	Water Body	■ Pleasant Lake
U.S. Highway	— U.S. —	Military	■ Fort Belvoir
State Highway	— S.H. —	Outside Subject Area	■
Other Road	—		
Railroad	— RR —		
Perennial Stream	— Cr —		
Intermittent Stream	— Cr —		

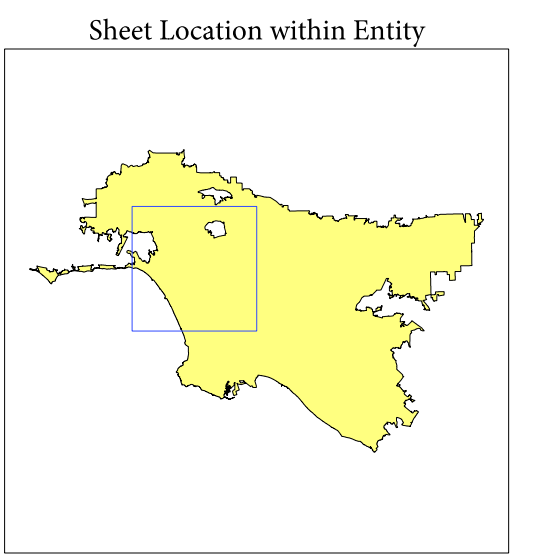
Where international, state, county, and/or MCD boundaries coincide, the map shows the boundary symbol for only the highest-ranking of these boundaries.

1 A ** following an MCD name denotes a false MCD. A *** following a place name indicates that a false MCD exists with the same name and FIPS code as the place; the false MCD label is not shown.

2 MCD boundaries are shown in the following states in which some or all MCDs function as general-purpose governmental units: Connecticut, Illinois, Indiana, Kansas, Maine, Massachusetts, Michigan, Minnesota, Missouri, Nebraska, New Hampshire, New Jersey, New York, North Dakota, Ohio, Pennsylvania, Rhode Island, South Dakota, Vermont, and Wisconsin. (Note that Illinois and Nebraska have some counties covered by nongovernmental precincts and Missouri has some counties covered by nongovernmental townships.)

3 Place label color corresponds to the place fill color.
Label colors: Davis Davis Davis Davis Davis

SUBJECT AREA COUNTIES ON MAP SHEET
06037 Los Angeles



All legal boundaries and names are as of January 1, 2010. Urban areas are based on results from the 2010 Decennial Census. The boundaries shown on this map are for Census Bureau statistical data collection and tabulation purposes only; their depiction and designation for statistical purposes does not constitute a determination of jurisdictional authority or rights of ownership or entitlement.

Geographic Vintage: 2010 Census (reference date: January 1, 2010)
Data Source: U.S. Census Bureau's MA/TIGER database (TAB10)
Map Created by Geography Division: March 11, 2012

Projection: Albers Equal Area Conic
Datum: NAD 83
Spheroid: GRS 80
1st Standard Parallel: 34 06 27
2nd Standard Parallel: 40 25 20
Central Meridian: -119 18 20
Latitude of Projection's Origin: 32 31 43
False Easting: 0
False Northing: 0

The plotted map scale is 1:48000



Key to Sheets

1	2	3
4	5	6
8	9	

PARENT SHEET 5
Total Sheets: 11
Index Sheets: 1
Parent Sheets: 10

UA NAME: Los Angeles--Long Beach--Anaheim, CA
UA CODE: 51445
ENTITY TYPE: Urbanized Area (UA)
ST: California (06)

ATTACHMENT A