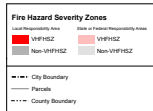
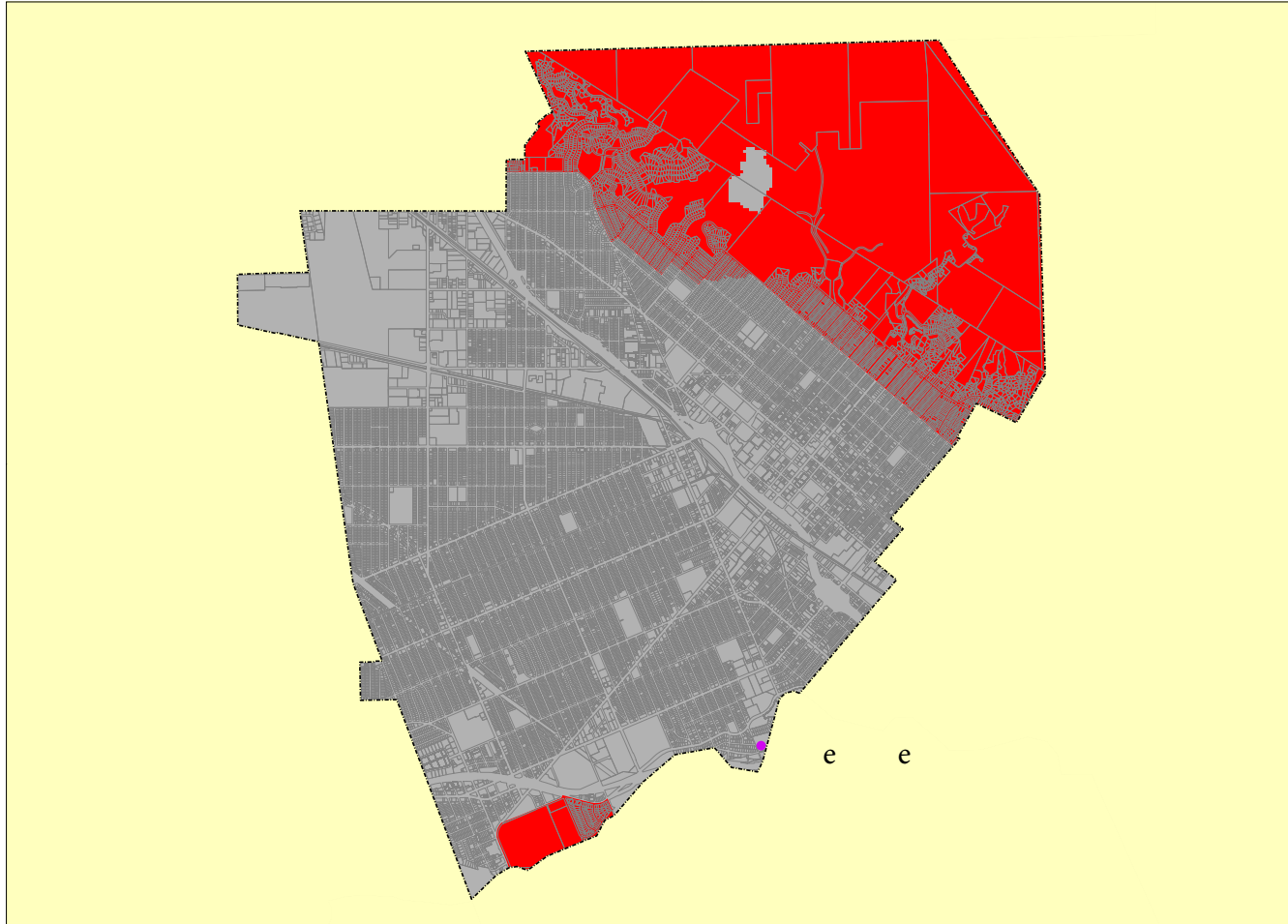
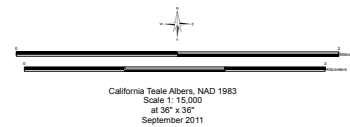


Very High Fire Hazard Severity Zones in LRA As Recommended by CAL FIRE



Government Code 41775.98 directs the California Department of Forestry and Fire Protection (CAL FIRE) to identify, map and label Very High Fire Hazard Severity Zones (VHFHSZ) based on data and models of potential wildfire risk to life and property. CAL FIRE is required to identify, map and label VHFHSZ based on data and models of potential wildfire risk to life and property. CAL FIRE is required to identify, map and label VHFHSZ based on data and models of potential wildfire risk to life and property. CAL FIRE is required to identify, map and label VHFHSZ based on data and models of potential wildfire risk to life and property.

This map was developed using data products such as parcel and city boundaries provided by local government agencies. In certain cases, this includes copyrighted geographic information. The maps are for display purposes only - questions and requests related to parcel or city boundary data should be directed to the appropriate local government entity.



The State of California and the Department of Forestry and Fire Protection make no representations or warranties regarding the accuracy of data or maps. Neither the State nor the Department shall be liable under any circumstances for any direct, special, incidental, or consequential damages with respect to any claim by any user or third party on account of, or arising from, the use of data or maps.

Obtain FRAP maps, data, metadata and publications on the Internet at <http://frap.cdf.ca.gov>
For more information, contact CAL FIRE-FRAP, PO Box 942426, Sacramento, CA 94244-2460, (916) 327-3539.

Jerry Brown, Governor,
State of California
Jules Lurie, Secretary for Resources,
The Natural Resources Agency
Ken Pimlott, Director,
Department of Forestry and Fire Protection

MAP ID: Burbank
DATA SOURCES
CAL FIRE Fire Hazard Severity Zones (FRHSZ_06_1)
CAL FIRE Very High Fire Hazard Severity Zones in LRA - Los Angeles (c19hsz06_5)



ATTACHMENT E - VERY HIGH FIRE HAZARD SEVERITY ZONES