



KinderCare
LEARNING CENTERS

**ENROLL
NOW**

Affordable & Quality Child Care for Low Income Families

Burbank Housing Corporation (BHC) manages two nationally accredited child development centers, The Peter McGrath Child Development Center and The Mary Alice O'Connor Family Center. 20% of the spaces are reserved at subsidized tuition rate for low-income families who qualify.

Check out our Monthly Tuition & Rates Schedules

Low Income Monthly Rates—Effective March 2025

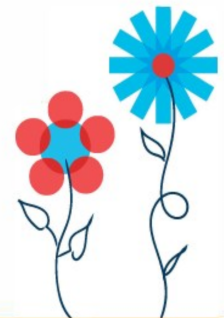
Age Group	5 Days	MWF	TTh
Infant & Toddlers (0-2yrs)	\$815		
Discovery Preschool (2-3yrs)	\$690	\$520	\$405
Preschool & Pre-K (3-4yrs)	\$605	\$455	\$360

Very Low Income Monthly Rates—Effective March 2025

Age Group	5 Days	MWF	TTh
Infant & Toddlers (0-2yrs)	\$655		
Discovery Preschool (2-3yrs)	\$550	\$415	\$325
Preschool & Pre-K (3-4yrs)	\$480	\$366	\$285

* Additional registration & program fees may apply to both rates

Special discounted tuition rates are available for BHC residents that qualify! Give us a call to schedule a tour to see our facilities and meet the team. For more information, visit www.kindercare.com.



Peter McGrath Child Development Center

2300 N. Ontario Street
Burbank CA 91504
Ph: (818) 565-3572
Mon—Fri: 7:00am—6:00pm
LIC: 198009900 & 198009901

Mary Alice O'Connor Family Center

401 N Buena Vista Street
Burbank CA 91505
Ph: (818) 846-1063
Mon—Fri: 7:00am—6:00pm
LIC: 198013177 & 198013176