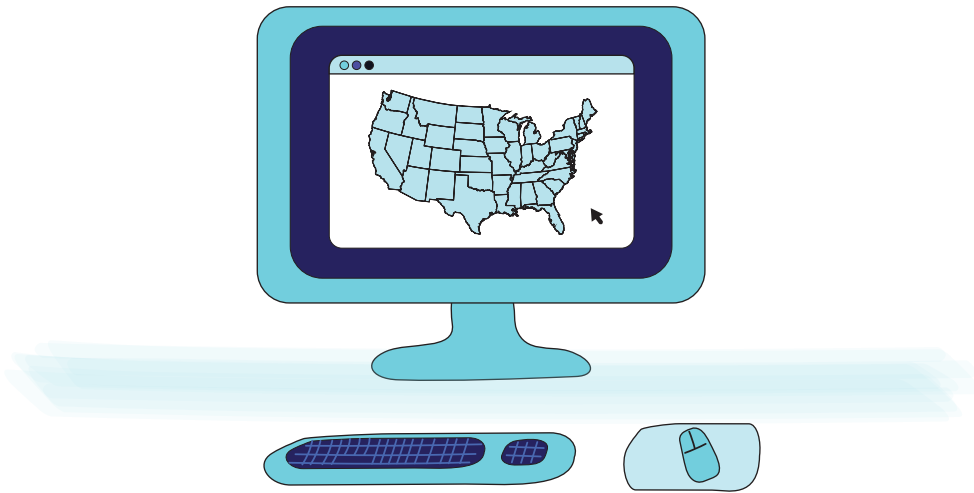


What to Do with Used Sharps



Sharps refer to: needles, syringes, lancets, auto injectors, including epinephrine and insulin pens, infusion sets, and connection needles/sets

Check www.SafeNeedleDisposal.org for local guidance on sharps disposal.

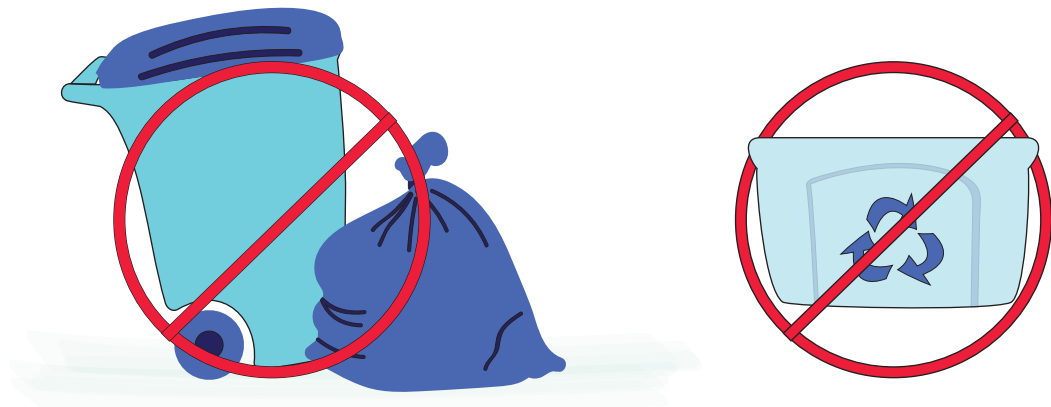


Put used sharps in a strong, plastic container.

When the container is 3/4 full, put the lid on, seal it with duct tape and label **NEEDLES — DO NOT RECYCLE.**



Drop off sealed containers at designated safe sharps disposal—**DO NOT PLACE IN RECYCLE OR TRASH BINS!**



Nearby Designated Drop Off Sites

Randall Street S.A.F.E. Collection Center
11025 Randall St.
Sun Valley, CA 91352
800-773-2489
Open Saturdays and Sundays, 9am–3pm

Glendale–Los Angeles S.A.F.E. Collection Center
4600 Colorado Blvd.
Los Angeles, CA 90039
800-773-2489
Open Saturdays and Sundays, 9am–3pm

Hollywood Wilshire Health Center
5205 Melrose Ave.
Los Angeles, CA 90038
323-769-7800
Open Mondays and Thursdays, 8am–11am

Los Angeles County Sheriff's Department–La Crescenta Station
4554 N. Briggs Ave.
La Crescenta, CA 91214
818-248-3464
Open 24/7

It is illegal in California to place containers of used sharps in the trash, recycle bin or flush loose needles down the toilet. Visit SafeNeedleDisposal.org for more information on safe sharps disposal options.



SafeNeedleDisposal.org
Safety is the point.