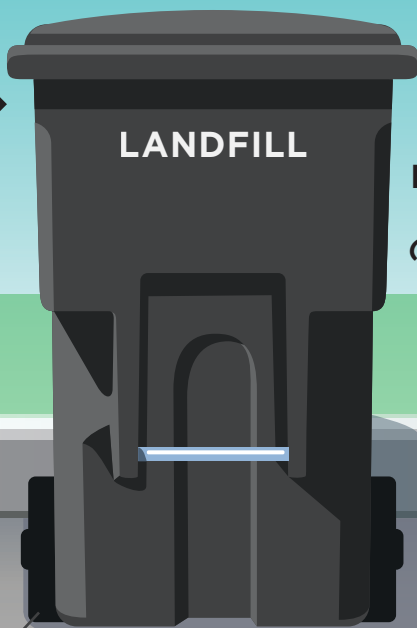




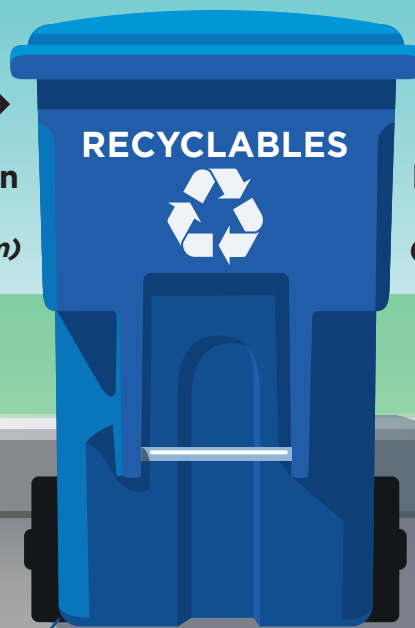
PUBLIC WORKS

# SMART CART CURB GUIDE

3 ft  
between  
fixed  
objects



1 ft  
between  
carts  
(minimum)



1 ft  
between  
carts  
(minimum)



**LANDFILL CART**  
• No hazardous waste

**RECYCLABLES CART**  
• Don't bag recyclables  
• Clean items - no liquids  
• No loose bag (*film*) material  
• No hazardous waste, tangler items, toys or clothing  
**NOW ACCEPTED: Pizza boxes and #1 clear clamshells and cups**

**GREEN WASTE CART**  
• Only yard trimmings  
**Keep the Green Clean!**  
• No plastics or materials that contaminate composting operations. Remind your landscaper!  
**Food Scrap collection coming Spring 2022**

## SMART CART BEST PRACTICES

- Set out only when full (*this saves wear and tear on your bin and reduces truck stops*)
- Carts 1 ft apart (*Don't block driveways unless your own*)
- Face wheels towards curb
- Lids must be closed
- Weight limit 200 lbs

**Where it GOES**

Answers at Your Disposal

To better understand what goes where – go to  
Where it Goes guide: [whereitgoes.burbankca.gov](http://whereitgoes.burbankca.gov)