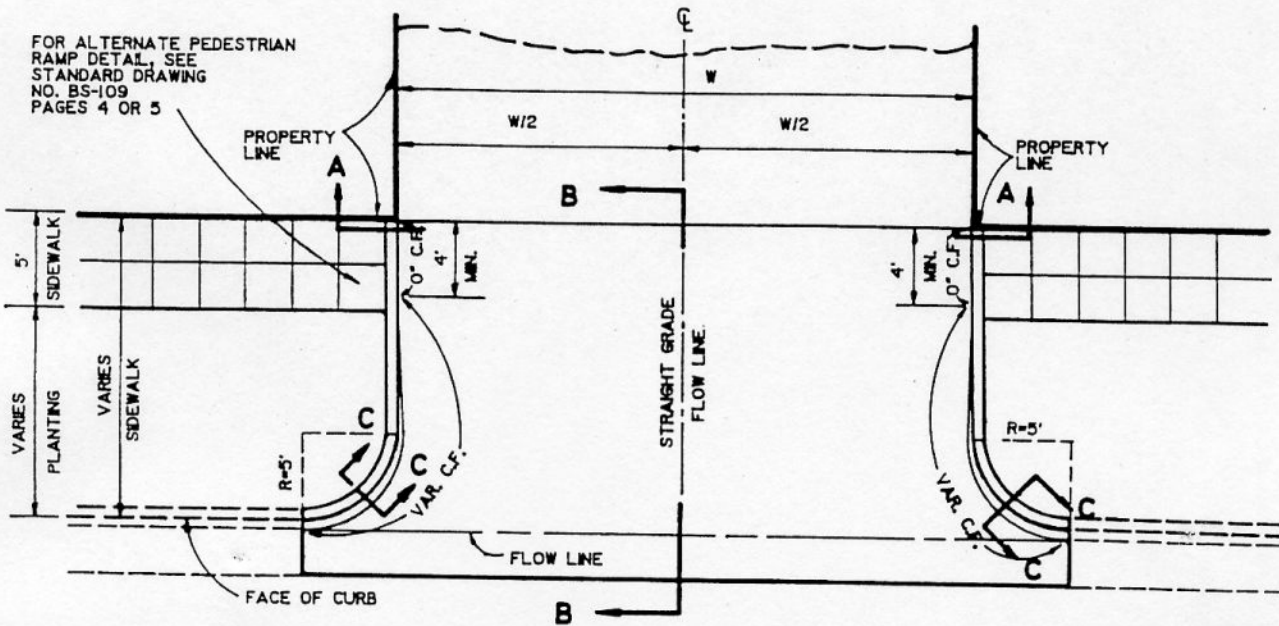
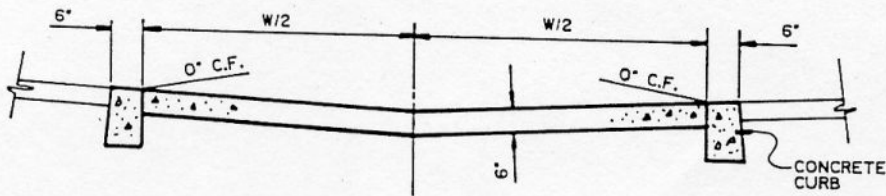


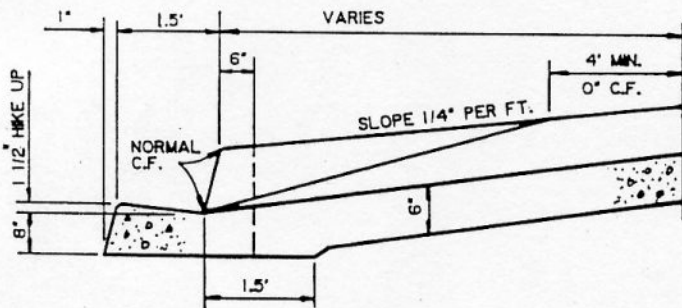
FOR ALTERNATE PEDESTRIAN RAMP DETAIL, SEE STANDARD DRAWING NO. BS-109 PAGES 4 OR 5



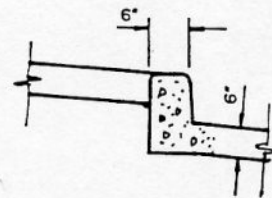
PLAN



SECTION A-A



SECTION B-B



SECTION C-C

NOTES:

1. ALL WORKS SHALL BE CONSTRUCTED IN ACCORDANCE WITH THE LATEST ACCEPTED STANDARDS FOR PUBLIC WORKS CONSTRUCTION.
2. CURB SHALL BE CONSTRUCTED PER CITY OF BURBANK STANDARD DRAWING NO. BS-100
3. CONCRETE SHALL BE CLASS 520-C-2500
4. WHERE SIDEWALK EXISTS, IT SHALL BE TO NEAREST SCORELINE FROM CURB AND REPLACED WITH 3 1/2" CONCRETE SIDEWALK UNLESS OTHERWISE SPECIFIED.

CITY OF BURBANK - PUBLIC WORKS DEPARTMENT

REV	BY	DATE

ALLEY APPROACH

APPROVED BY: *[Signature]* 6-1-92
Public Works Director Date

STANDARD PLAN
BA-202
SHEET 1 OF 1