

City of Burbank Parks and Recreation  
& Fine Arts Federation Presents



# 2023 Youth Art Expo

# Deep Dive Into Art

## Gallery Receptions



Grades 6 - 12

Thursday, April 6

5:30 - 7:00pm

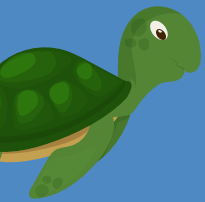
Grades K - 5

Friday, April 7

5:30 - 7:00pm

## Artwork Submission Deadline

Friday, March 17, 2023 by 5pm



Besty Lueke Creative Arts Center  
1100 West Clark Ave  
Burbank, CA 91506  
818.238.5397  
[cacmail@burbankca.gov](mailto:cacmail@burbankca.gov)



# Youth Art Expo

Betsy Lueke Creative Arts Center Gallery

April 6 - 21



## Aims and Objectives

- The Youth Art Expo annually showcases the talents of Burbank Youth by allowing them to compete and show their creativity.
- The Youth Art Expo will be a judged and juried show. Due to limited space, acceptance and display is not guaranteed.



## Judging

- Gallery space is limited. All artwork received will be subject to a selection process, by grade, to determine which pieces will be displayed in the gallery.
- The initial selection committee may be comprised of Betsy Lueke Creative Arts Center staff and/or instructors.
- Displayed artwork will be juried prior to the show opening to determine award winners.
- Judges will be selected from the local art community.
- Awards will be given on the following basis:

One per grade (TK/K-12)

One for 3-Dimensional (TK-5)

One for 3-Dimensional  
(6-12)

One for Photography (6-12)

- Additionally, there will be a Best of Show award for grades TK-5 and 6-12.

## Youth Art Expo Gallery Exhibit

April 6 - 21

Betsy Lueke Creative Arts Center  
1100 West Clark Avenue  
Burbank CA 91506

818.238.5397 | cacmail@burbankca.gov

## Entry Rules

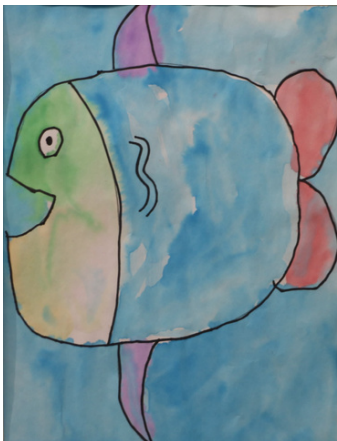
- The Youth Art Expo is open to students in grades TK-12 who attend a Burbank public, private, or home school, or live in Burbank.
- Only one (1) entry per student.
- Artwork must be on quality paper, no larger than 18" x 24". Three dimensional artwork may also be submitted.
- Artwork for grades 6-12 should be matted in a neutral tone mat when possible.
- Entries must be complete and ready to exhibit. All parts must be secure and all paint and glue must be dry. Clay/pottery must be fired.
- Artwork may be on any subject line or theme, however, artwork including vulgarity, gratuitous violence, or material that may be considered offensive will be disqualified.
- All entries must be LABELED with artist's name, grade, school and teacher.

\* Parent contact info required for home school or independent submissions.



## Artwork Submission

- Submissions will be accepted February 13 - March 17.
- All artwork must be dropped off to the Betsy Lueke Creative Arts Center
- All Artwork must be properly labeled.
- Be sure to review the entry rules.
- Featured artwork will be returned to schools the week of May 1, 2023



PARKS AND  
RECREATION

