

Youth Art Expo

Betsy Lueke Creative Arts Center Gallery

April 7 - 21

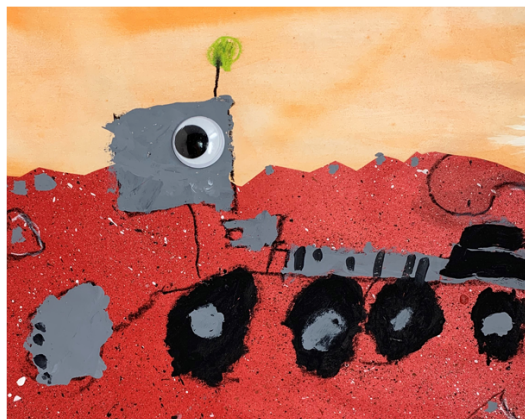
Aims and Objectives

- The Youth Art Expo annually showcases the talents of Burbank Youth by allowing them to compete and show their creativity.
- The Youth Art Expo will be a judged and juried show. Due to limited space, acceptance and display is not guaranteed.



Artwork Submission

- Submissions will be accepted February 14 - March 11.
- All artwork must be dropped off to the Betsy Lueke Creative Arts Center Mon-Fri 9:00am-5:00pm.
- All Artwork must be properly labeled.
- Be sure to review the entry rules.
- Featured artwork will be returned to schools the week of May 2, 2022.



Judging

- Gallery space is limited. All artwork received will be subject to a selection process, by grade, to determine which pieces will be displayed in the gallery.
- The initial selection committee may be comprised of Betsy Lueke Creative Arts Center staff and/or instructors.
- Displayed artwork will be juried prior to the show opening to determine award winners.
- Juror will be selected from the local art community.
- Awards will be given on the following basis:
 - One per grade (TK/K-12)
 - One for 3-Dimensional (TK-5)
 - One for 3-Dimensional (6-12)
 - One for Photography (6-12)
- Additionally, there will be a Best of Show award for grades TK-5 and 6-12.

Youth Art Expo Gallery Exhibit April 7 - 21

Betsy Lueke Creative Arts Center
1100 West Clark Avenue
Burbank CA 91506

818.238.5397 | cacmail@burbankca.gov



PARKS AND
RECREATION



Entry Rules

- The Youth Art Expo is open to students in grades TK-12 who attend a Burbank public, private or home school, or live in Burbank.
- **Only one (1) entry per student.**
- Artwork must be on quality paper, no larger than 18" x 24". Three dimensional artwork may also be submitted.
- Artwork for grades 6-12 should be matted in a neutral tone mat when possible.
- Entries must be complete and ready to exhibit. All parts must be secure and all paint and glue must be dry. Clay/pottery must be fired.
- Artwork may be on any subject line or theme, however, artwork including vulgarity, gratuitous violence, or material that may be considered offensive will be disqualified.
- **All entries must be LABELED with artist's name, grade, school and teacher.**
*Parent contact info required for home school or independent submissions.

