

COMMUNITY INFORMATIONAL MEETING - ALEPPO PINE TREE REFORESTATION

November 1, 2023



**PARKS AND
RECREATION**

AGENDA

- Welcome and Introductions
- Commitment to urban forest
- Why are we here?
- Long-term plan
- Aleppo Pine Trees
- Next steps
- Community Input
- How to stay engaged

COMMITMENT TO URBAN FOREST

- 33,000-tree urban forest
- 46-year involvement with Tree City USA
- Safety is the City's priority
- Investment in a tree maintenance program



Plant for a Greener Burbank

The Plant for a Greener Burbank Initiative aims to add a minimum of 500 trees annually in Burbank's parks, residences, businesses, and streets.



WHY ARE WE HERE?

- February 2023 – 3 Aleppo Pine tree failures
- May 2023 – City Forestry Division’s arboriculture experts identified up to 125 aged Aleppo Pine trees that are reaching the end of their natural life. Recommended to strategically remove, replace and add more trees.

Aleppo Pine Tree Failures



Aleppo Pine Tree Failures



WHY ARE WE HERE?

- July 2023 – City Council funded the implementation of the Reforestation Strategy as part of the Fiscal Year 2023-24 Budget.
- July 2023 – Notification to residents of Reforestation Strategy.
- July 2023 - Implementation paused to allow for community engagement and education, and to conduct additional research.
- August 2023 - City hired a third party to conduct additional analysis, prepared by an independent ISA Certified Arborist and ISA Qualified Tree Risk Assessor.
- September 2023 – Presentations to the Parks & Recreation Board and Sustainable Burbank Commission.

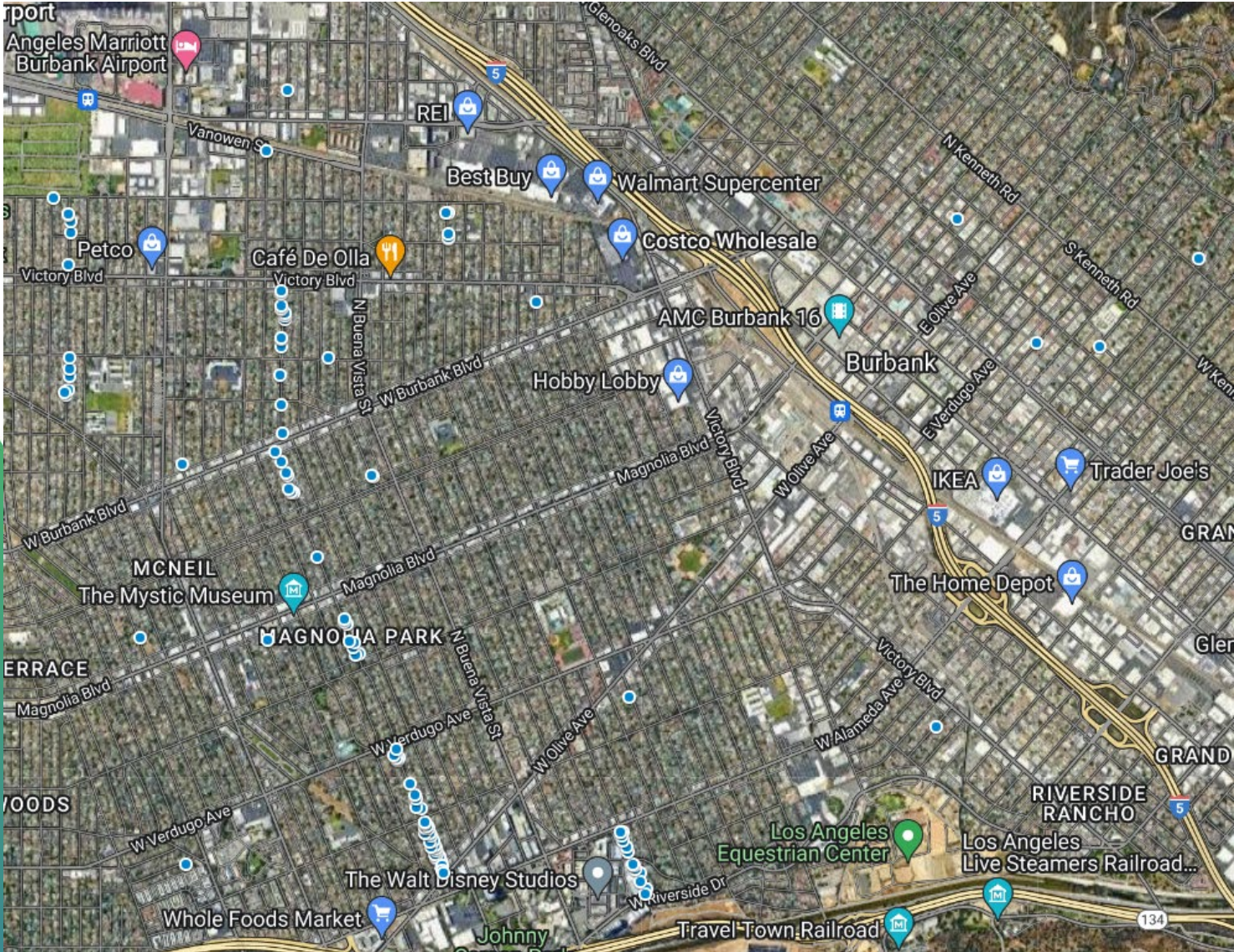
LONG-RANGE PLAN

- **2008 City Tree Master Plan**
 - Guiding document to enhance and preserve the City's trees
 - Identifies designated street trees for each public street on a block-by-block basis
 - Living document that responds to changing conditions such as climate change
 - Identifies the need to develop a replacement plan for the City's most mature trees
- **City Tree Master Plan to be updated in FY 2024-25.**

ALEPPO PINE TREES

- Independent Tree Risk Assessment Report Completed in September 2023
- Assessment of Aleppo Pine trees for general health and safety concerns
- Report supports City's arboriculture experts' recommendation
- Tiered risk assessment on all trees and noted their risk of failure
 - 3 trees deemed as imminent "urgent" risk of failure – *Removed*
 - 119 trees grouped into three categories based on risk

Tree Focus Area



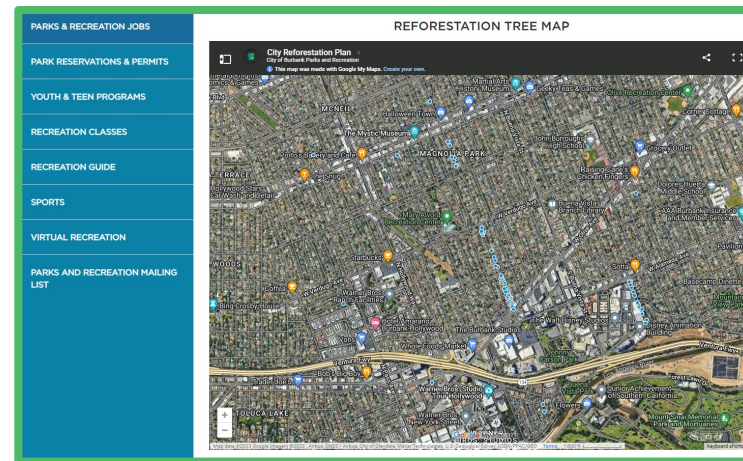
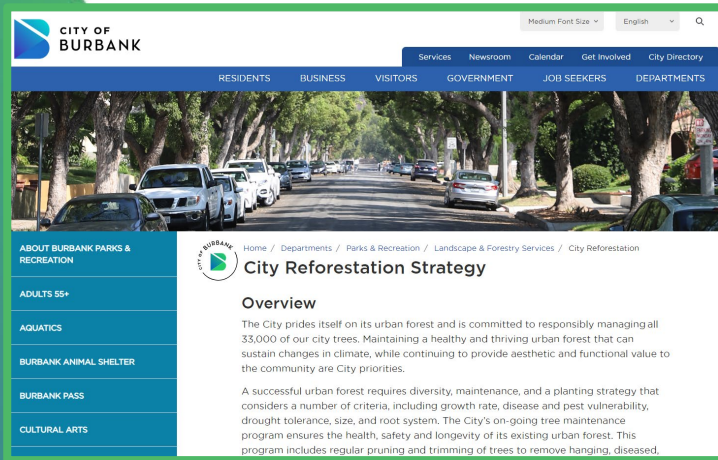
NEXT STEPS

- Environmental Assessment on 119 trees in accordance to the California Environmental Quality Act (CEQA)
- City Council
 - Report on findings from the environmental assessment
 - Receive direction on Aleppo Pine Reforestation

COMMUNITY INPUT

STAY ENGAGED

- Email – CityReforestation@BurbankCA.gov
- Webpage - www.BurbankCA.gov/CityReforestation



THANK YOU



**PARKS AND
RECREATION**