



Reduce Reuse Rethink

Burbank Recycle
Center Newsletter

SUN-SATIONAL SUSTAINABILITY: TIPS FOR A GREENER SUMMER

Single-Use Propane Disposal

Campers frequently enjoy a warm breakfast and fresh cup of coffee while making plans for a day of hiking—whether it is under the massive, old-growth redwoods up north, or close by in the San Gabriel Mountains. Propane is the element that frequently makes that possible. It powers the camp stoves and other equipment that enhance the camping experience.

Once you are finished with your propane tank, it is important to dispose of it properly. Propane tanks, including smaller sizes, can be dangerous for sanitation workers if placed in the trash because they can explode if any gas remains inside. Even tanks that feel empty are considered household hazardous waste and should NEVER be thrown in the trash. Instead, they should be taken to a hazardous



Credit: Joe_Potato | iStock | Getty Images Plus

waste collection center. For those in Burbank, the closest drop-off location is the Randall Street S.A.F.E. Collection Center, located at 11025 Randall Street, Sun Valley, CA 91352. An even better option is to use refillable tanks!

Refillable Propane Cylinders

Due to the significant costs associated with the disposal of over 4 million single-use propane tanks each year in California, single-use propane tanks will no longer be legal to sell in the state starting January 1, 2028. To stay ahead of this law, consider switching to refillable propane tanks now. A refillable 1-pound propane tank can be refilled hundreds of times, greatly reducing the impact on landfills.

You can find retailers in California that supply refillable tanks at: refuelyourfun.org. The nearest refill exchanges to Burbank are located at Long Beach Ace Hardware (746 E. 4th St., Long Beach, CA 90802) and Crown Ace in Huntington Beach (9045 Adams Ave., Huntington Beach, CA 92646). The initial purchase price for a tank is around \$23.00, and exchanged tanks typically cost about \$12.00.

Waste-Less Picnics

Long weekends and lazy picnics are a summer tradition, so a little attention to some details can help keep our picnic areas pristine.

1. Use reusable dishware. We have all been to parks that have overflowing trash from parties. Help be a solution to the problem by bringing reusable picnic ware. Whether you choose the classic blue speckled enamelware or playfully patterned reusable plastic, the food looks better on the environmentally friendly choice.

2. Plan for the food. When planning a picnic, make sure to coordinate with others so that there is not an excess of food that goes to waste. Be realistic about portions — the last thing you want for your budget or for the environment is to throw away food.



Credit: golero | E+ | Getty Images

3. Set up a three-stream system.

Even at the park or beach, you can collect food scraps in a bag and bring them home to your green bin, and the same goes for recycling. Some picnic areas have recycling at the location, but if not, it's easy to pack it out with you. The key is to let everyone know what goes where.

Enjoy our incredibly rich and varied California landscape this summer and keep it beautiful for years to come!

Farmers' Market and L.A. Compost

Summer is an ideal time to visit Burbank's Certified Farmers' Market. Pick up fresh ingredients for dinner or your trip to the beach. July is peak season for asparagus, avocados, melons, peaches, plums, strawberries, grapes, and tomatoes. The market also boasts local honey, sprouts, eggs, olive oil, fresh seafood, yogurt, pasta, organic pastries, and much more.

A new addition to the market is compost drop off. L.A. Compost is offering a free collection of food scraps. Bring your compostable materials to the booth at the market, and leave the materials with L.A. Compost volunteers, who will take your food scraps and turn them into compost at one of the many hubs around Los Angeles County. To find out which food scraps are accepted, visit lacompost.org/start-composting for the program's collection guidelines. Although the service is free, you can always leave a donation.



The market runs Saturdays from 8:00 a.m. to 12:00 p.m. and is located on the corner of Olive Ave. and Glenoaks Blvd. in downtown Burbank.

PRESORTED
STANDARD
U.S. POSTAGE
PAID
PERMIT NO. 40
GARDENA, CA
ECSRWS

Postal Patron

Burbank Recycle Center
500 South Flower St.
Burbank, CA 91502

WASTE REDUCTION AND RECYCLING LAWS

Changes to Foodware - Waste Reduction Ordinance

You may be noticing some changes around town. For instance, some items are missing from the shelves that you are accustomed to buying. This is due to Burbank's waste reduction ordinance. Polystyrene packaging—also known as plastic #6—is banned in Burbank. Styrofoam falls under this category, but other products made from plastic #6 can include red "party" cups and coffee lids. Much of the sin-

gle-use plastic cutlery, plates, and cups that are made from this material can be identified by a numeral 6 within a recycling symbol (the chasing arrows triangle).

Also coming to Burbank is a change in the takeout materials distributed at restaurants. Beginning January 1, 2026, all dine-in foodware must be reusable. For instance, if you order a drink "for here" at a coffee shop, you will receive a ceramic or glass mug. If you prefer your drink to-go, you will receive a single-use product that conforms to the new guidelines. To comply with the ordinance, all to-go food service ware must be either compostable (home compostable and unlined) or recyclable (plastics #1, #2, and #5; non-black). Exceptions will be made in cases where an acceptable replacement cannot be obtained.



Credit: dreamsquare | iStock | Getty Images Plus



The Evolution of Trash Collection - SB 1383

When you dine at a fast food or fast-casual restaurant, you may notice three different waste containers for sorting your trash. This is becoming more common as restaurants comply with California's Senate Bill 1383, which aims to reduce methane gas emissions from landfills. Organic materials buried in landfills produce methane gas, a significant contributor to global warming. In fact, methane is 28 times more potent than carbon dioxide, according to the Environmental Protection Agency.

Due to this law, you might encounter the following:

- Three separate waste bins at businesses.
- Clear signage indicating where different types of waste belong.

- Separate green, blue, and black waste collection at your residence.

- Educational materials on proper sorting for residents of multi-family units (provided when moving in and annually thereafter).

At restaurants with three waste containers, you should place food waste and compostable foodware in the green bin, recyclables in the blue bin, and any remaining waste into the trash bin. This sorting process also applies at home. It's important to remember that proper separation of waste is your responsibility. If you have any questions or need assistance, the Recycle Center staff is available to help. You can email zerowaste@burbankca.gov for technical assistance.

Report Violations on the 311 App

Help enforce the changing environmental laws in Burbank! With the 311 app, Burbank residents are encouraged to report the following waste law violations to the city. Once reported, a city employee will follow up with your complaint within 60 days. The following are a list of complaints that you may need to report:

Complaints for multi-family buildings of 5 units or more

- Does not have organics or recycling collection.
- Does not provide adequate signage or educational materials.
- Does not monitor the proper sorting of recycling, organics, and trash.

Complaints for businesses

- Sells or distributes polystyrene (#6 plastic) packaging.
- Does not provide public receptacles for sorting organics, trash, and recycling for customers who eat on the premises and are expected to clear their own tables.

- Automatically provides accessories or condiment packets without customer request.
- Starting Jan 1, 2026, serving dine-in customers with single-use foodware or distributing to-go foodware that is not compostable or recyclable.



OUR BURBANK
311

DOWNLOAD THE
OUR BURBANK 311
MOBILE APP!

Use the Our Burbank 311 App to request:

- ▶ bulky item pickup
- ▶ street repairs
- ▶ and so much more!



Download the App for FREE from the
Apple App Store or Google Play Store.



Green Restaurants and School Spotlight

Romancing the Bean, a family-owned cafe and local favorite located in Magnolia Park, is already way ahead of Burbank's waste reduction ordinance, which will require reusable food service ware for all dine-in guests starting January 1, 2026. Order the house-made granola with a matcha latte for breakfast or the Ahi Tuna Nicoise salad for lunch, and you will be served on ceramic dishware. You will notice more restaurants using reusable dishware as the ordinance goes into effect. Kudos to Romancing the Bean! (3413 W. Magnolia Blvd., Burbank, CA 91505).

Sweetgreen, a restaurant that features seasonal salads and grain bowls, provides an accessible and clearly labeled three-stream waste system to their customers. Customers can easily scrape food waste into an organics bin, place recyclable materials into a recyclable container, and put any remaining trash into the landfill bin. Great job complying with California's SB 1383, which requires a three-stream waste system for customers! (4320 W. Riverside Dr., Burbank, CA 91505).

Roosevelt Elementary School in Burbank has been named a 2025 California Green Ribbon Schools Bronze Award winner, joining just 30 schools statewide that have been honored for environmental innovation, student wellness, and hands-on sustainability education. This distinction recognizes Roosevelt's steadfast commitment to sustainability, environmental education, and wellness—thanks to a passionate grassroots movement led by a team of parent volunteers, dedicated staff and teachers, environmentally-minded students, and Principal, Matt Osmond.

Over the past seven years, the Roosevelt Planeteers Sustainability Team has initiated several key programs:

- Launching an organics waste sorting program in 2019.
- Banning single-use plastic water bottles on campus for all school and PTA events.
- Planting native drought-resistant plants.
- Creating a sensory garden and outdoor classroom.
- Installing air quality monitors, and raising awareness about air pollution and the importance of clean air on campus.



- Developing a reusable plates, cups, and utensils system, cutting down significantly on single-use waste in the classrooms.
- Creating a zero-waste annual Fun Run fundraising event.
- Spearheading a Bike Bus program for safe transportation, while mitigating drop-off traffic congestion.
- Planning a community demonstration garden with Burbank Water and Power for hands-on-learning opportunities for students and families.
- Hosting a Halloween costume swap to promote reuse.
- Utilizing reusable decorations for schoolwide events and classroom parties.

These efforts align with the California Green Ribbon Schools program's three pillars: reducing environmental impact and costs, improving the health and wellness of schools, and providing effective environmental education. Third grader Isabella Shipp says, "I think it's beautiful to see our whole school come together to make the earth better." The Roosevelt Elementary community views this award as a milestone with ambitions to inspire sustainability efforts across the Burbank Unified School District.



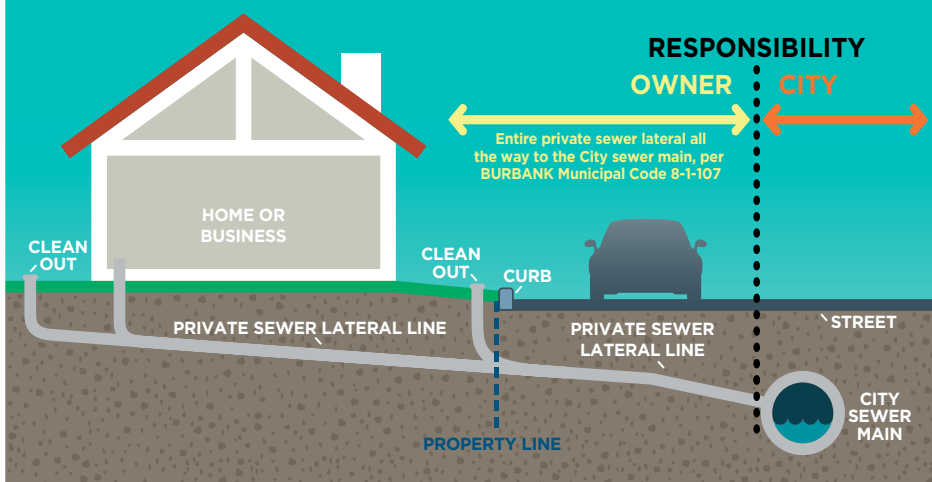
Credit: Oleh_Slobeniuk | E+ | Getty Images

Where it goes, the cure for "Wishcycling"

Recycling is limited to paper, metal, beverage glass, and plastic containers (jugs, tubs, and bottles). If you question whether an item is recyclable, chances are it's probably not. The common recommendation is "when in doubt, throw it out." But that doesn't account for a plethora of hazardous waste or other items, such as batteries or prescription medications, which should never be placed in the trash.

Take the guesswork out of disposal and reduce the confusion on where it goes by simply visiting the City of Burbank's Where it Goes guide. This is an online, searchable tool with disposal information on over 400 materials.

Who's responsible if the plumbing backs up?



Avoid sewer backups with SLURP
 Sewer Lateral User Rebate Program (SLURP) provides home or duplex owners a \$150 credit towards having their system cleaned by a plumber. Learn more: Burbankca.gov/SLURP

Curb Your Recycling

Have you “bin” confused on recycling and other waste questions? Join the experts at the Burbank Recycle Center for a hands-on workshop covering the basics of what goes where—and why. You’ll gain a clearer understanding of recycling realities, packaging materials, hazardous waste, and composting. The session wraps up with a guided tour of Burbank Recycle Center.

WASTE WARRIORS BOOTCAMP
Curb Your Recycling
 Understanding Recycling and Waste Prevention

Wednesday, September 24 | 6-8:30pm
 Burbank Recycle Center, 500 S. Flower St.
 Advanced Registration Required: BurbankRecycle.org

Sewer Lateral: Who's Responsible When the Plumbing Backs Up?

We are all connected. The pipe connecting your home or business to the district's main sewer in the street is called a sewer lateral. And while mostly out of sight and out of mind, sewer laterals are a hidden but crucial part of the wastewater collection system. Hidden, that is, until a sewer backup occurs. Yet, urgent sewer line incidents are actually caused by invasions to the system over time.

What causes sewer problems? Discharge of fats, oils and grease — often referred to as FOG — are detrimental to sewer laterals. Over time, the FOG will congeal and stick to the inside of your lateral, accumulate, and block the flow causing a backup into your home. Please do not send any wipe marked as “flushable” into the sewer system and instead please throw the “flushable” wipes out in the garbage can. These wipes can result in significant blockages in the sewer system, as well as wrap around sewage pumping equipment, which may result in costly repairs or sewer overflows.

However, often times the root of the lateral blockage is, well, tree roots. Roots from trees and shrubs seek out moisture inside the lateral and will enter the pipe if they

find a crack or open joint. Once they tap into the source of water, roots can grow incredibly fast and in short order can damage the pipe or, more commonly, can restrict flow or completely block the sewer lateral. Even if the roots infiltrating your pipes are coming from a parkway tree, it is the property owner's responsibility to ensure sewer lateral maintenance on their property.

The City of Burbank's Sewer Lateral User Rebate Program (SLURP) provides ratepayers a \$150 credit towards having their private sewer lateral cleaned and inspected. This involves hiring a plumber to clean and video record the sewer lateral after the work is completed. To get the rebate the following needs to be submitted.

- Copy of the plumber's receipt
- Copy of the post-cleaning video inspection showing that the lateral is clean all the way to the City sewer main
- Completed SLURP rebate form

To learn more about property owner sewer lateral maintenance and the City of Burbank's SLURP rebate program, go to burbankca.gov/SLURP.

New mattress delivery coming?

Your retailer will take the old one. [Learn more.](http://byebymattress.com)



LA FIXIT CLINIC
 Do you have a household item in need of repair? Don't trash it! Come fix it for FREE at one of our upcoming Fix It Clinics, where we will provide the space, tools, and expert coaches to help you troubleshoot and repair your well-loved item.

ITEMS TO REPAIR: Bicycles | Clothing | Electronics | Small Appliances | Toys | Jewelry

Community Partners: City of Burbank Parks and Recreation, City of Burbank Recycle Center

July 26, 2025
 1:00 pm - 4:00 pm
 Joslyn Adult Center
 1301 W. Olive Avenue
 Burbank, CA 91506

RSVP Today!
bit.ly/LAFC-Burbank

Interested in volunteering? bit.ly/FixitCoach-Apply

Mark Your Calendar

- Fixit Clinic: Saturday, July 26th, 1 p.m. - 4 p.m. at Joslyn Adult Center, 1301 W. Olive Avenue
- National Night Out: Tuesday, August 5th, 5:30 p.m. - 8:30 p.m. at Johnny Carson Park, 400 Bob Hope Drive
- Household Hazardous Round-up: Saturday, September 7th, 10 a.m. - 3 p.m. at Burbank Fire Department Training Center, 1845 N Ontario Street
- Curb Your Recycling: Wednesday, Sept. 24th, 6 p.m. - 8:30 p.m. (Waste Warriors basic training) at Burbank Recycle Center, 500 S. Flower Street
- DEA National Medication Takeback Day: Saturday, October 25th, 10 a.m. - 2 p.m. at Burbank Police Department, 200 N. Third Street

Public Works Customer Service

Public Works Field Services:
 818-238-3800
 Distribution and collection of trash, organics and recycling bins and carts

Bulky Item Pickup:
 818-238-3800
 To request pickup of oversized furniture and appliances only

[Facebook.com/BurbankRecycle](https://www.facebook.com/BurbankRecycle)

Burbank Recycle Center

Recycling drop-off, electronics collection, bottle and can drop-off, composting information
 500 South Flower Street, 91502
 818-238-3900



For information on disposal:
BurbankRecycle.org
Whereitgoes.Burbankca.gov

[Instagram.com/BurbankRecycle](https://www.instagram.com/BurbankRecycle)